



**Price**

**£170,000**

**Leasehold**

1x  1x  1x 

**Cranfield Park Court,  
Radwinter Avenue,  
Wickford, Essex, SS12**

**OVER 60?**

Secure this property  
for up to **59% less!**

 **DOUGLAS  
ALLEN**  
Helping you move forwards



## Main features

- **First floor apartment**
- **Beautifully fitted kitchen**
- **Open plan lounge/kitchen**
- **Close proximity to Wickford Town Centre & mainline Railway Station**
- **An excellent first time purchase/investment opportunity**

## Accommodation

### GROUND FLOOR

Communal Entrance  
Communal Stairs

### FIRST FLOOR

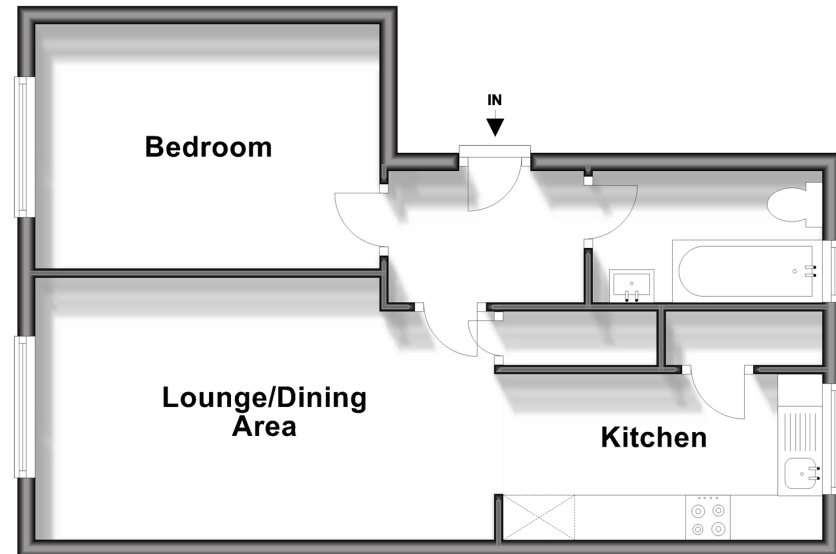
Entrance Door  
Entrance Hallway  
Lounge/Dining Area: 16'4 x 9'7 (4.98m x 2.92m)  
Kitchen: 11'7 x 5'11 (3.53m x 1.80m)  
Bedroom 1: 12'6 x 8'7 (3.81m x 2.62m)  
Bathroom

### OUTSIDE

Communal Parking

## First Floor

Approx. 42.8 sq. metres (460.3 sq. feet)



**Call Wickford - 01268 561287 ■ [douglasallen.co.uk](http://douglasallen.co.uk)**

■ Legal advice should be taken to verify fixtures/fittings, planning, alterations and/or lease details  
■ Through a Homewise Home For Life Plan people aged 60+ can secure this property for up to 59% less, by purchasing a Lifetime Lease.

■ Appliances & services are untested, dimensions are approximate and floor plans are not to scale