



OVER 60?

Secure this property
for up to **59% less!**

Price

£475,000

Freehold

4x  2x  1x 

**Portland View,
Wickford, Essex, SS11**

 **DOUGLAS
ALLEN**
Helping you move forwards



Main features

- Immaculate condition
- Garage and off Street Parking
- Un-overlooked rear garden
- En-suite to bedroom 1
- Situated close to Wickford mainline railway station, shops and amenities.

Accommodation

GROUND FLOOR

- Entrance Hallway
- Cloakroom
- Lounge/Dining Area: 15'3 x 13'6 (4.65m x 4.12m)
- Kitchen: 17'5 x 7'6 (5.31m x 2.29m)

FIRST FLOOR

- Landing
- Bedroom 1: 15'2 x 10'3 (4.63m x 3.13m)
- En-Suite Shower Room
- Bedroom 2: 11'4 x 8'3 (3.46m x 2.52m)
- Bathroom

SECOND FLOOR

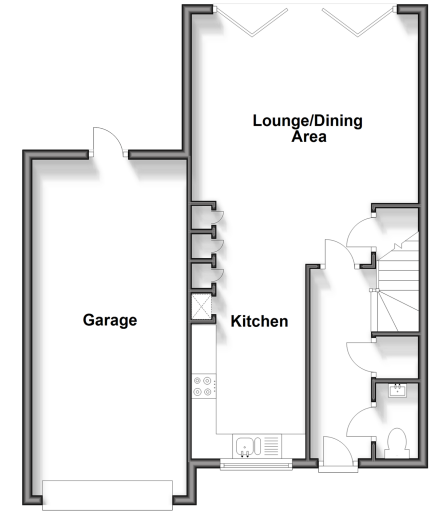
- Landing
- Bedroom 3: 11'3 x 11'1 (3.43m x 3.38m)
- Bedroom 4: 13'0 x 8'0 (3.97m x 2.44m)

OUTSIDE

- Rear Garden
- Garage
- Off Street Parking

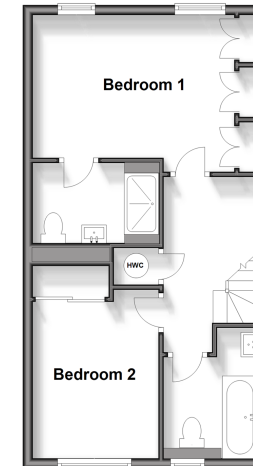
Ground Floor

Approx. 63.6 sq. metres (684.7 sq. feet)



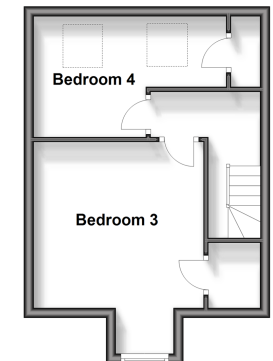
First Floor

Approx. 41.5 sq. metres (446.8 sq. feet)



Second Floor

Approx. 28.4 sq. metres (305.5 sq. feet)



Call Wickford - 01268 561287 ■ douglasallen.co.uk

- Legal advice should be taken to verify fixtures/fittings, planning, alterations and/or lease details
- Appliances & services are untested, dimensions are approximate and floor plans are not to scale
- Through a Homewise Home For Life Plan people aged 60+ can secure this property for up to 59% less, by purchasing a Lifetime Lease.



53412949/20240822/MB/LC