



Price
£317,500

Freehold

2x  1x  1x 

**Heathcroft Road,
Wickford, Essex, SS11**

OVER 60?

Secure this property
for up to **59% less!**

 **DOUGLAS
ALLEN**
Helping you move forwards



Main features

- Attractive rear garden
- Ideal first time buy opportunity
- Two allocated parking spaces
- Popular Shotgate location within Wickford
- Quiet cul-de-sac position

Accommodation

GROUND FLOOR

Entrance Hallway

Lounge/Dining Room: 20'4 x 14'11
(6.20m x 4.55m)

Kitchen: 8'7 x 8'0 (2.62m x 2.44m)

FIRST FLOOR

Landing

Bedroom 1: 18'3 x 9'1 (5.57m x 2.77m)

Bedroom 2: 11'0 x 9'3 (3.36m x 2.82m)

Bathroom

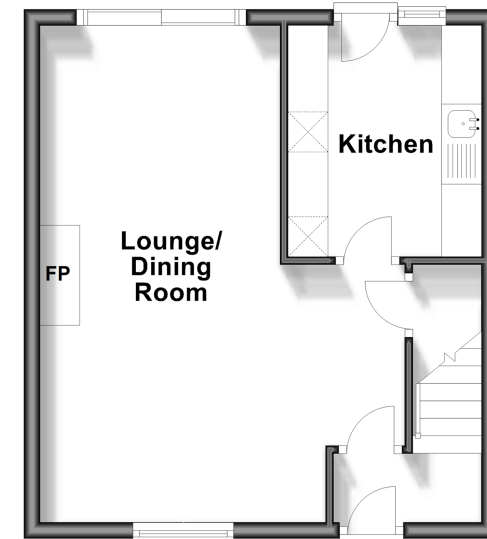
OUTSIDE

2 Allocated Parking Spaces

Rear Garden

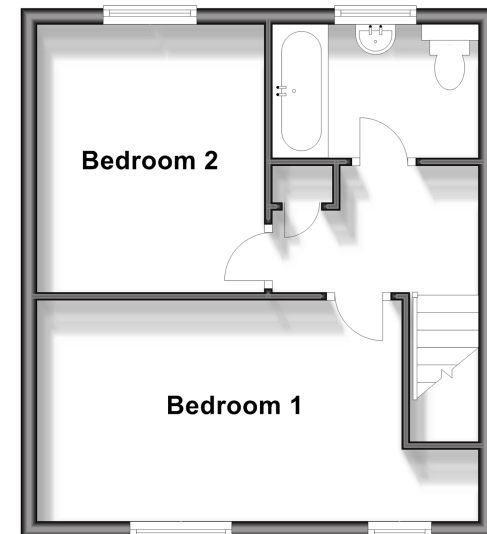
Ground Floor

Approx. 34.4 sq. metres (370.2 sq. feet)



First Floor

Approx. 34.4 sq. metres (370.2 sq. feet)



Call Wickford - 01268 561287 ■ douglasallen.co.uk

- Legal advice should be taken to verify fixtures/fittings, planning, alterations and/or lease details
- Appliances & services are untested, dimensions are approximate and floor plans are not to scale
- Through a Homewise Home For Life Plan people aged 60+ can secure this property for up to 59% less, by purchasing a Lifetime Lease.



53412506/20240822/AH/AH