



**Price**  
**£425,000**

**Freehold**

4x  2x  2x 

**Lucerne Walk, Wickford,  
Essex, SS11**

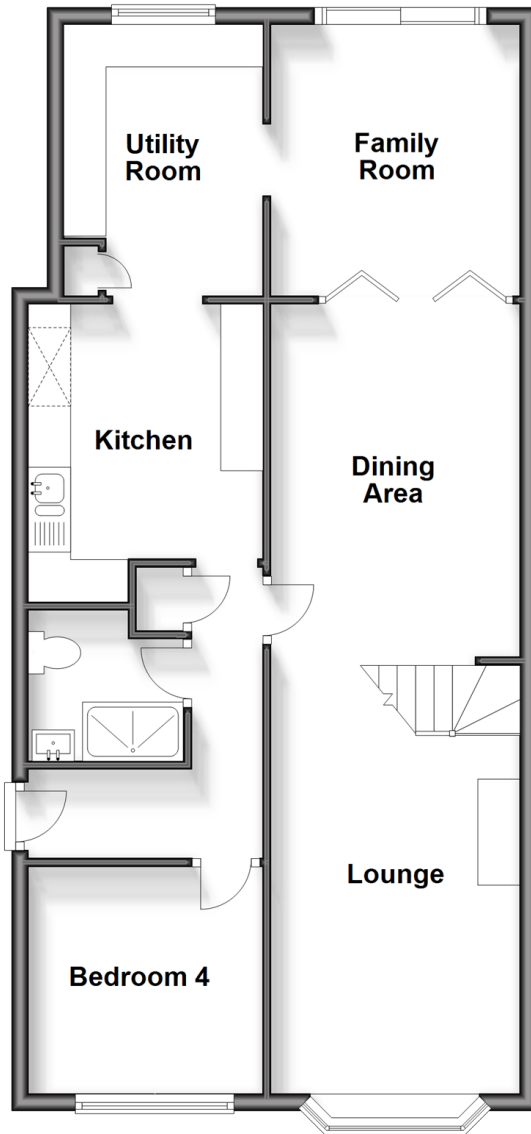
**OVER 60?**

Secure this property  
for up to **59% less!**

 **DOUGLAS  
ALLEN**  
Helping you move forwards

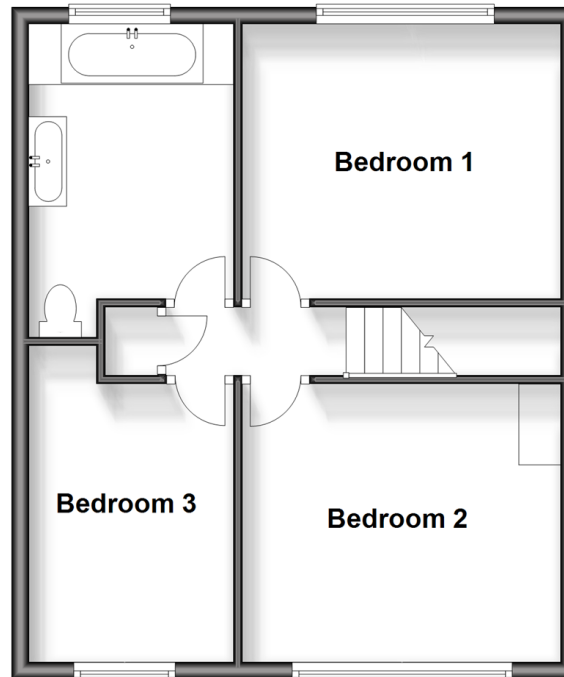
## Ground Floor

Approx. 72.3 sq. metres (777.8 sq. feet)



## First Floor

Approx. 47.5 sq. metres (511.0 sq. feet)



## Accommodation

### GROUND FLOOR

Entrance Hallway

Bedroom 4: 9'2 x 8'11 (2.80m x 2.72m)

Shower Room

Kitchen: 9'10 x 8'11 (3.00m x 2.72m)

Utility Room: 10'8 x 7'7 (3.25m x 2.31m)

Family Room: 11'5 x 9'8 (3.48m x 2.95m)

Dining Area: 13'7 x 10'9 (4.14m x 3.28m)

Lounge: 16'7 x 10'8 (5.06m x 3.25m)

### FIRST FLOOR

Landing

Bedroom 1: 12'0 x 10'11 (3.66m x 3.33m)

Bedroom 2: 16'7 x 10'1 (5.06m x 3.08m)

Bedroom 3: 10'11 x 7'11 (3.33m x 2.41m)

Bathroom

### OUTSIDE

Rear Garden

Off street parking



## Main features

- Larger family home
- Downstairs shower room and huge upstairs bathroom
- Off street parking to front
- Single story rear extension as well as a loft conversion
- Recently re-fitted kitchen and utility area

## Nearest Schools

Primary Schools: Hilltop Junior School 0.5 miles, Abacus Primary 0.7 miles, Oakfield Primary 0.9 miles

Secondary Schools: Beauchamps High School 0.2 miles, The Bromfords School 1.5 miles, Castledon School 1.6

## Transport Information

Train Stations: Wickford 1.1 miles, Battlesbridge 1.2 miles, Rayleigh 2.7 miles

## Address

Lucerne Walk, Wickford, Essex, SS11

## Directions

For directions to this property please contact us.

