



**Price**  
**£425,000**

**Freehold**

4x  1x  2x 

**Honington Close,  
Wickford, Essex, SS11**

**OVER 60?**

Secure this property  
for up to **59% less!**

 **DOUGLAS  
ALLEN**  
Helping you move forwards

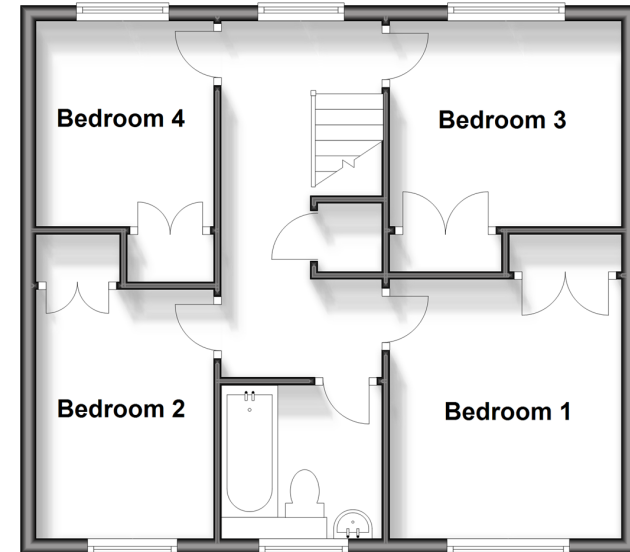
## Ground Floor

Approx. 50.6 sq. metres (544.4 sq. feet)



## First Floor

Approx. 51.0 sq. metres (548.9 sq. feet)



## Accommodation

### GROUND FLOOR

Cloakroom  
Entrance Hallway  
Lounge: 22'2 x 13'2 (6.76m x 4.02m)  
Kitchen: 11'4 x 8'0 (3.46m x 2.44m)  
Dining Room: 11'3 x 10'2 (3.43m x 3.10m)  
Office

### FIRST FLOOR

Landing  
Bedroom 1: 10'0 x 8'7 (3.05m x 2.62m)  
Bedroom 2: 10'7 x 9'9 (3.23m x 2.97m)  
Bedroom 3: 8'7 x 7'7 (2.62m x 2.31m)  
Bedroom 4: 11'5 x 8'0 (3.48m x 2.44m)  
Bathroom

### OUTSIDE

Rear Garden  
Off Street Parking



## Main features

- Four double bedroom detached house.
- Garage and of street parking
- Ground floor cloak room
- Shotgate location
- Excellent condition throughout



### Nearest Schools

Primary Schools: Abacus Primary 0.6 miles, Hilltop Junior School 0.8 miles, Oakfield Primary 1.0 miles

Secondary Schools: Beauchamps High School 0.6 miles, The Bromfords School 1.6 miles, Castledon School 1.7



### Transport Information

Train Stations: Battlesbridge 1.3 miles, Wickford 1.4 miles, Rayleigh 2.4 miles



### Address

Honington Close, Wickford, Essex, SS11



### Directions

For directions to this property please contact us.

