



Price  
**£440,000**

**Freehold**

3x  1x  2x 

**Whist Avenue,  
Wickford, Essex, SS11**

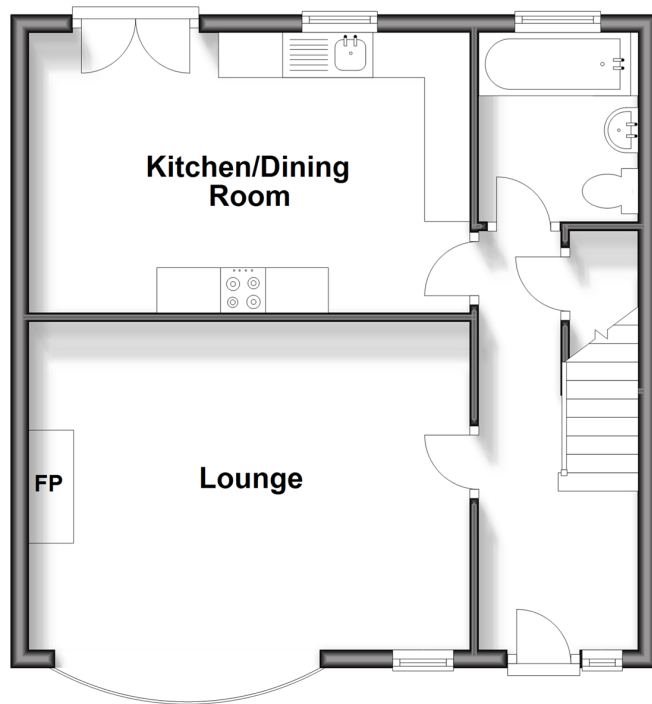
**OVER 60?**

Secure this property  
for up to **59% less!**

 **DOUGLAS  
ALLEN**  
Helping you move forwards

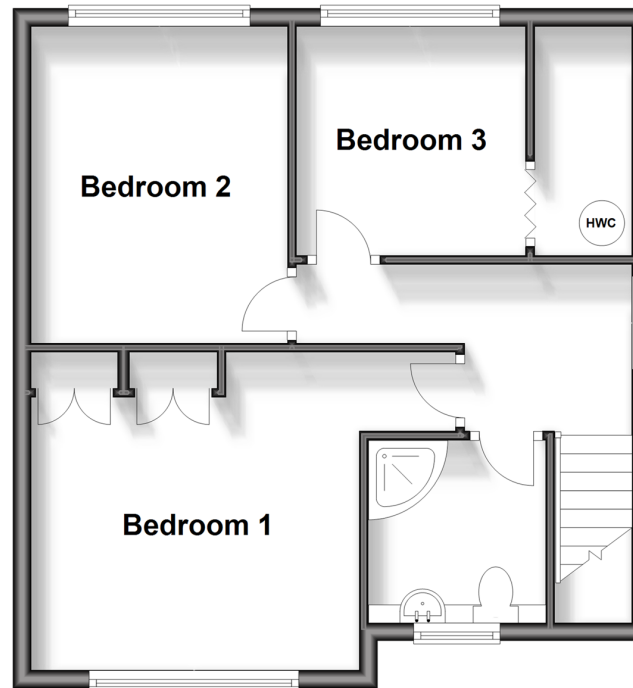
## Ground Floor

Approx. 46.5 sq. metres (500.6 sq. feet)



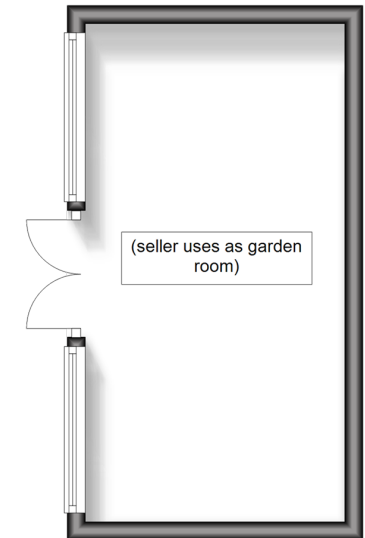
## First Floor

Approx. 45.8 sq. metres (492.7 sq. feet)



## Outbuilding

Approx. 15.9 sq. metres (170.6 sq. feet)



## Accommodation

### GROUND FLOOR

Entrance Hallway

Lounge: 16'0 x 11'9 (4.88m x 3.58m)

Kitchen/Dining Room: 15'9 x 9'8 (4.80m x 2.95m)

Bathroom

Landing

Bedroom 1: 11'9 x 10'7 (3.58m x 3.23m)

Bedroom 2: 11'3 x 9'5 (3.43m x 2.87m)

Bedroom 3: 8'6 x 8'2 (2.59m x 2.49m)

Shower Room

Off Street Parking

Garden Room

### FIRST FLOOR

### OUTSIDE

Front & Rear Garden



## Main features

- Three good sized bedroom semi detached house
- Kitchen/diner
- Ground floor bathroom and first floor shower room
- Garden room and off street parking
- Close to Beauchamps Schools, shops and amenities



### Nearest Schools

Primary Schools: Hilltop Junior School 0.2 miles, North Crescent Primary 1.5 miles, Wickford Junior School 1.6 miles

Secondary Schools: Beauchamps High School 0.7 miles,



### Transport Information

Train Stations: Wickford 1.7 miles, Rayleigh 4.2 miles, Battlesbridge 4.7 miles



### Address

Whist Avenue, Wickford, Essex, SS11



### Directions

For directions to this property please contact us.



Call Wickford Branch 01268 561287 ■ [douglasallen.co.uk](http://douglasallen.co.uk)



- Legal advice should be taken to verify fixtures/fittings, planning, alterations and/or lease details
- Appliances & services are untested, dimensions are approximate and floor plans are not to scale
- Through a Homewise Home For Life Plan people aged 60+ can secure this property for up to 59% less, by purchasing a Lifetime Lease.

EPC RATING	CURRENT:	POTENTIAL:

53412727/20240420/GM/LC