



Price
£425,000

Freehold

4x  1x  2x 

**Longfield Road,
Wickford, Essex, SS11**

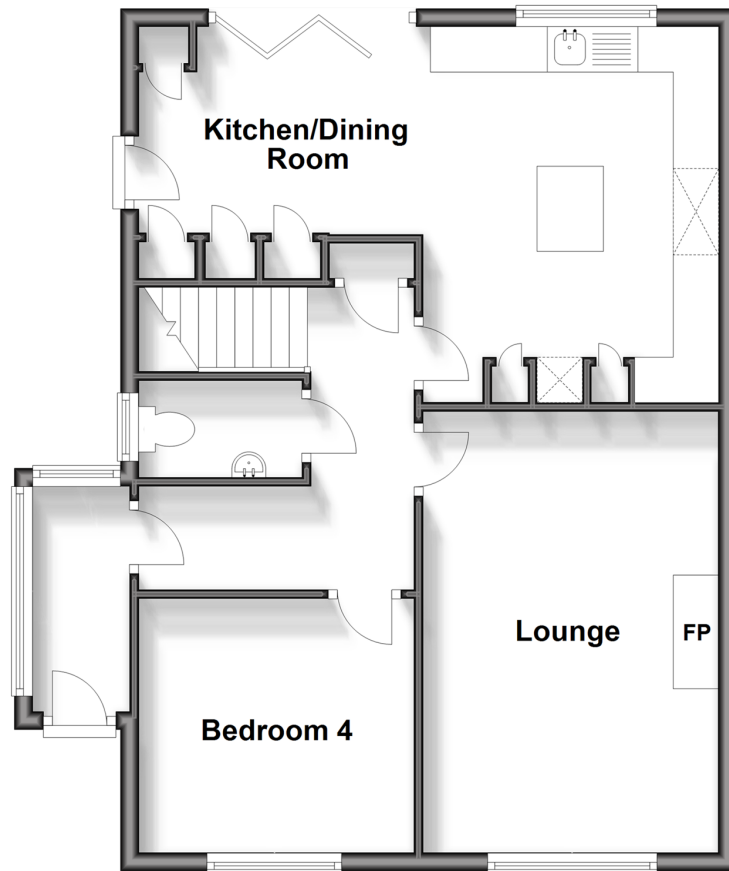
OVER 60?

Secure this property
for up to **59% less!**

 **DOUGLAS
ALLEN**
Helping you move forwards

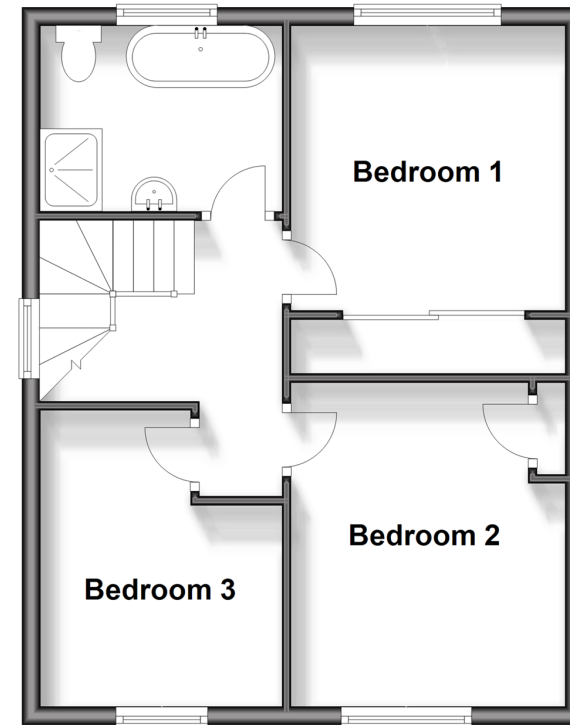
Ground Floor

Approx. 61.0 sq. metres (656.8 sq. feet)



First Floor

Approx. 43.4 sq. metres (467.5 sq. feet)



Accommodation

GROUND FLOOR

Entrance Hallway

Cloakroom

Kitchen/Dining Room: 20'3 x 13'7
(6.18m x 4.14m)

Lounge: 15'11 x 10'8 (4.85m x 3.25m)

Bedroom 4: 9'11 x 9'2 (3.02m x 2.80m)

FIRST FLOOR

Landing

Bedroom 1: 11'10 x 9'11 (3.61m x 3.02m)

Bedroom 2: 10'5 x 8'9 (3.18m x 2.67m)

Bedroom 3: 10'3 x 9'4 (3.13m x 2.85m)

Bathroom

OUTSIDE

Rear Garden

Off Street Parking



Main features

- Beautifully extended
- Kitchen/breakfast room
- Versatile living arrangements
- Popular Shotgate location with local amenities close by
- Landscaped rear garden with a large patio family area

Nearest Schools

Primary Schools: Hilltop Junior School 0.4 miles, Abacus Primary 0.6 miles, Oakfield Primary 0.8 miles

Secondary Schools: Beauchamps High School 0.2 miles, The Bromfords School 1.4 miles, Castledon School 1.4

Transport Information

Train Stations: Wickford 1.9 miles, Rayleigh 3.5 miles, Battlesbridge 3.9 miles

Address

Longfield Road, Wickford, Essex, SS11

Directions

For directions to this property please contact us.



Call Wickford Branch 01268 561287 ■ [douglasallen.co.uk](https://www.douglasallen.co.uk)



■ Legal advice should be taken to verify fixtures/fittings, planning, alterations and/or lease details ■ Appliances & services are untested, dimensions are approximate and floor plans are not to scale
■ Through a Homewise Home For Life Plan people aged 60+ can secure this property for up to 59% less, by purchasing a Lifetime Lease.

EPC RATING	CURRENT:	POTENTIAL:
	D(64)	B(90)

53412841/20240416/GM/AH