



Price

£120,000

Leasehold

1x  1x  1x 

**Bradwell House,
Southend Road,
Wickford, Essex, SS11**

OVER 60?

Secure this property
for up to **59% less!**

 **DOUGLAS
ALLEN**
Helping you move forwards



Main features

- Studio apartment
- Ground Floor
- No onward chain
- Within close proximity to Southend Road shops
- Open plan lounge/Sleeping area and kitchen

Accommodation

GROUND FLOOR

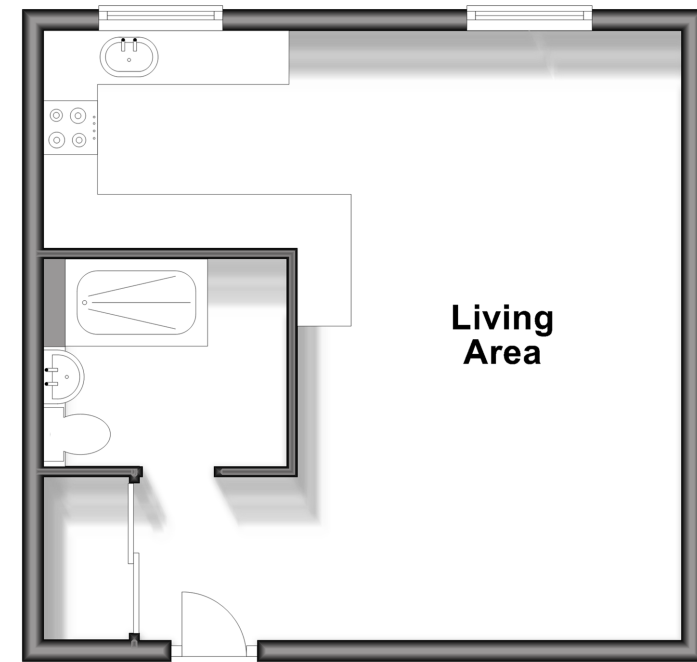
- Entrance door
- Living Area: 18'6 x 18'6 (5.64m x 5.64m)
- Kitchen
- Wet Room

OUTSIDE

- Communal Gardens
- Communal Parking

Ground Floor

Approx. 33.6 sq. metres (362.1 sq. feet)



Call Wickford - 01268 561287 ■ douglasallen.co.uk

■ Legal advice should be taken to verify fixtures/fittings, planning, alterations and/or lease details
■ Through a Homewise Home For Life Plan people aged 60+ can secure this property for up to 59% less, by purchasing a Lifetime Lease.

■ Appliances & services are untested, dimensions are approximate and floor plans are not to scale



53412821/20240521/AH/AH