



Price

£230,000

Leasehold

2x  1x  1x 

Ramsden Court, Golden  
Jubilee Way, Wickford,  
Essex, SS12

**OVER 60?**

Secure this property  
for up to **59% less!**

 **DOUGLAS  
ALLEN**  
Helping you move forwards



## Main features

- Popular Ramsden Court development
- Lift Access
- Allocated parking space
- Within walking distance to Wickford High Street and Train Station
- Being offered for sale with no onward chain.

## Accommodation

### GROUND FLOOR

Communal Entrance Hallway  
Communal Lifts and stairs

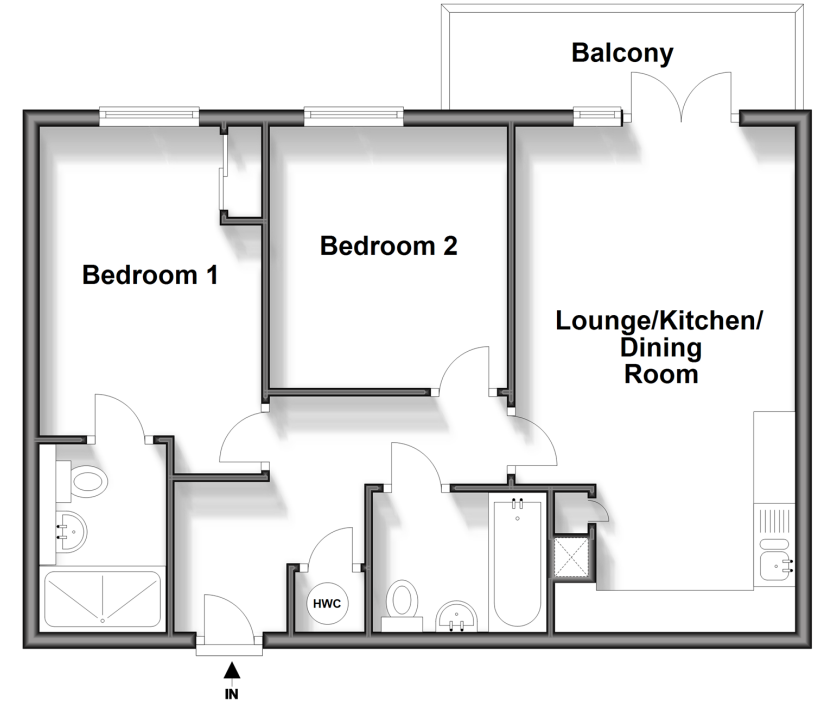
### FIRST FLOOR

Communal Landing  
Entrance Door  
Entrance Hallway  
Lounge/Kitchen/Dining Room: 21'10 x 11'0 (6.66m x 3.36m)  
Bedroom 1 : 14'2 x 8'9 (4.32m x 2.67m)  
En-Suite Shower Room  
Bedroom 2: 10'4 x 9'5 (3.15m x 2.87m)  
Bathroom

### OUTSIDE

Balcony  
Allocated Parking Space

**First Floor**  
Approx. 55.2 sq. metres (594.3 sq. feet)



**Call Wickford - 01268 561287 ■ [douglasallen.co.uk](http://douglasallen.co.uk)**

- Legal advice should be taken to verify fixtures/fittings, planning, alterations and/or lease details
- Appliances & services are untested, dimensions are approximate and floor plans are not to scale
- Through a Homewise Home For Life Plan people aged 60+ can secure this property for up to 59% less, by purchasing a Lifetime Lease.



53412587 / 20240316 / GM/AH