



Price

£575,000

Freehold

3x  2x  1x 

Bakers Farm Close,  
Wickford, Essex, SS11

**OVER 60?**

Secure this property  
for up to **59% less!**

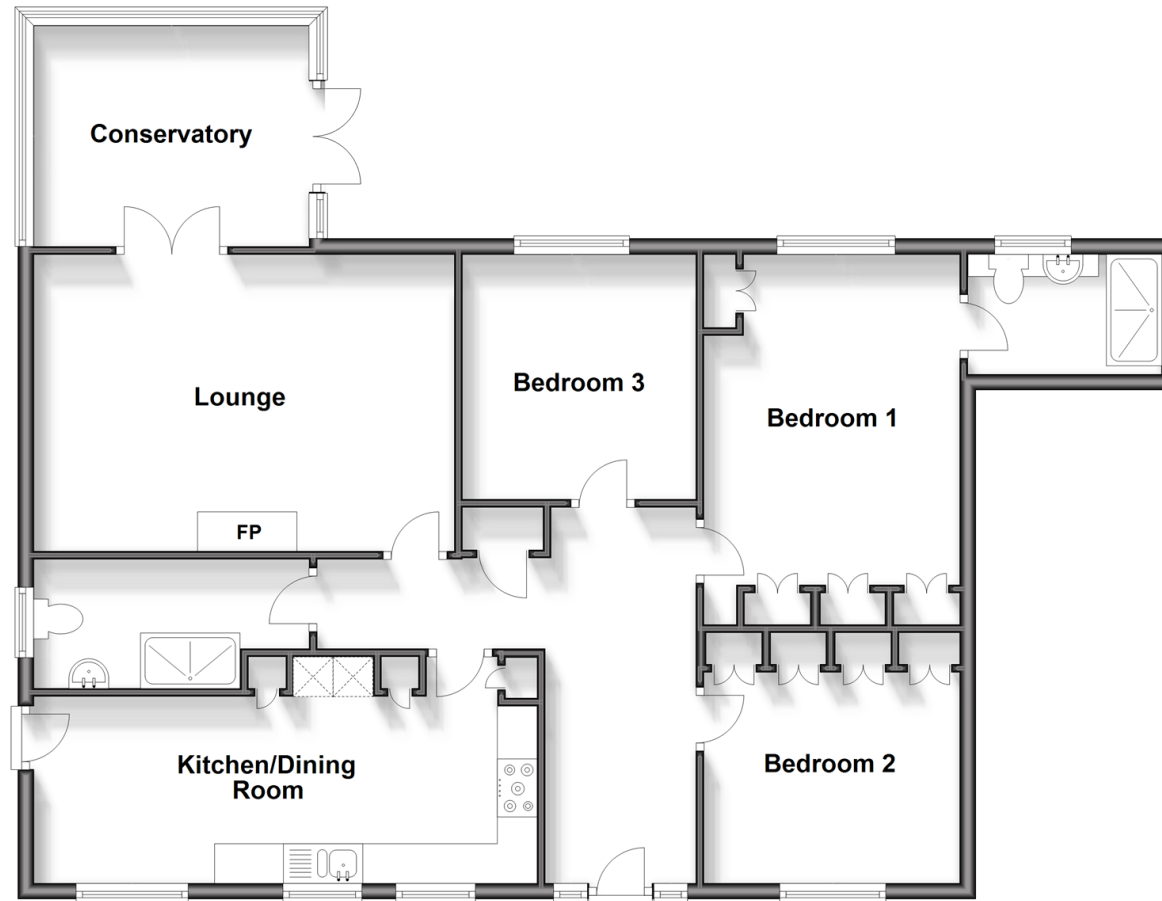


**DOUGLAS  
ALLEN**

Helping you move forwards

## Ground Floor

Approx. 106.1 sq. metres (1142.6 sq. feet)



## Accommodation

### GROUND FLOOR

Entrance Hallway

Kitchen/Dining Room: 20'11 x 8'11  
(6.38m x 2.72m)

Lounge: 17'4 x 13'7 (5.29m x 4.14m)

Conservatory: 10'7 x 9'8 (3.23m x 2.95m)

Bedroom 1 : 15'1 x 10'6 (4.60m x 3.20m)

En-Suite Shower Room

Bedroom 2: 10'6 x 8'5 (3.20m x 2.57m)

Bedroom 3: 10'2 x 9'6 (3.10m x 2.90m)

Shower Room

Rear Garden

Double Garage

Off Street Parking

### OUTSIDE



## Main features

- Double garage with off street parking
- Additional conservatory
- Three double bedrooms
- Outstanding family bungalow in a popular Shotgate location
- Viewings highly recommended to fully appreciate what is on offer

### Nearest Schools

Primary Schools: Hilltop Junior School 0.8 miles, Runwell Community Primary 1.2 miles, Grange Primary 1.5 miles  
Secondary Schools: Beauchamps High School 0.8 miles, The Bromfords School 2.3 miles, Castledon School 2.6 miles

### Transport Information

Train Stations: Battlesbridge 1.1 miles, Wickford 1.2 miles, Rayleigh 2.7 miles

### Address

Bakers Farm Close, Wickford, Essex, SS11

### Directions

For directions to this property please contact us.



Call Wickford Branch 01268 561287 ■ [douglasallen.co.uk](http://douglasallen.co.uk)



■ Legal advice should be taken to verify fixtures/fittings, planning, alterations and/or lease details ■ Appliances & services are untested, dimensions are approximate and floor plans are not to scale  
■ Through a Homewise Home For Life Plan people aged 60+ can secure this property for up to 59% less, by purchasing a Lifetime Lease.

EPC RATING	CURRENT:	POTENTIAL:

53412591/20240206/GM/AH