



**Price**  
**£300,000**

**Leasehold**

1x  1x  1x 

**Rayne Court, South  
Woodford, E18**

**OVER 60?**

Secure this property  
for up to **59% less!**

 **DOUGLAS  
ALLEN**  
Helping you move forwards



## Main features

- 1 bedroom purpose built flat
- Ideal for first time buyers
- Benefitting from 2 balconies
- Within a short distance to South Woodford and Snaresbrook Central Line Station
- Surrounded by local amenities, as well as being a short walk from Hadlow Ponds



## Accommodation

### FIRST FLOOR

Entrance Hall

Lounge/Dining Room: 15'1 x 13'4 (4.60m x 4.07m)

Balcony

Kitchen: 11'6 x 7'7 (3.51m x 2.31m)

Balcony

Bedroom: 13'4 x 9'9 (4.07m x 2.97m)

Bathroom

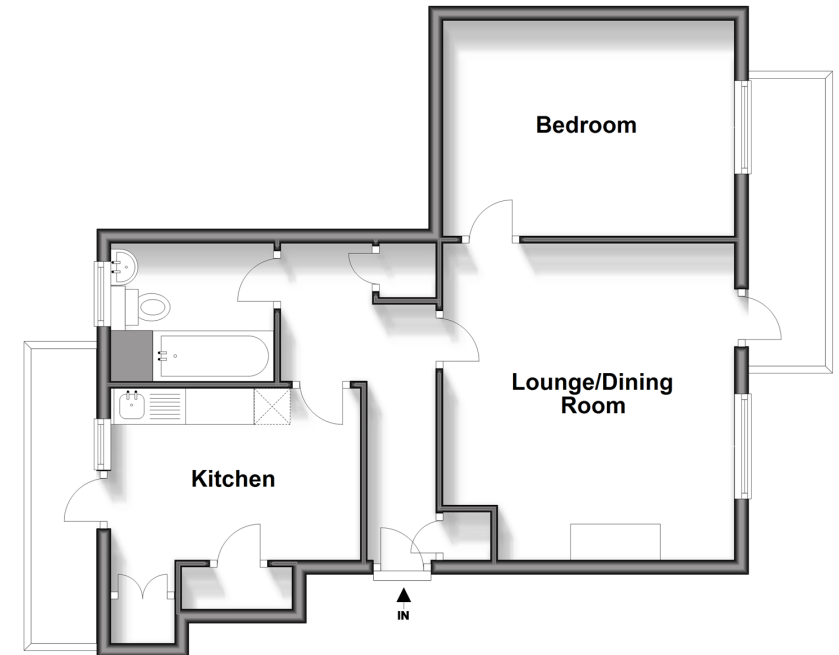
### OUTSIDE

Communal Garden



### First Floor

Approx. 52.9 sq. metres (569.6 sq. feet)



Call Wanstead - 020 8530 3741 ■ [douglasallen.co.uk](http://douglasallen.co.uk)

- A private rental licensing scheme applies to some properties in this area, please contact us before proceeding
- Legal advice should be taken to verify fixtures/fittings, planning, alterations and/or lease details
- Appliances & services are untested, dimensions are approximate and floor plans are not to scale
- Through a Homewise Home For Life Plan people aged 60+ can secure this property for up to 59% less, by purchasing a Lifetime Lease.



53211829/20240628/RUM/RUM