



Price
£230,000

Leasehold

1x 🏠 1x 🚗 1x 🚗

**High Road Leytonstone,
Leytonstone, E11**

 **DOUGLAS
ALLEN**
Helping you move forwards



Main features

- 1 bedroom second floor flat
- No onward chain
- Spacious accommodation
- Positioned in the heart of vibrant Leytonstone
- Close proximity to local restaurants and shops



Accommodation

SECOND FLOOR

Lounge/Diner: 14'8 x 10'10 (4.47m x 3.30m)

Kitchen: 14'0 x 5'7 (4.27m x 1.70m)

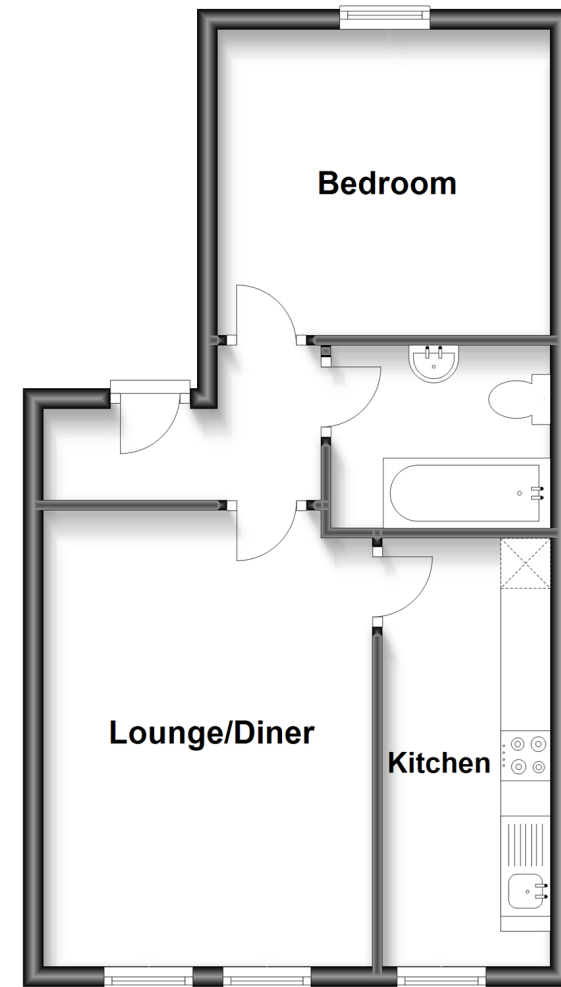
Bedroom: 11'0 x 10'0 (3.36m x 3.05m)

Bathroom: 7'3 x 5'11 (2.21m x 1.80m)



Second Floor

Approx. 41.1 sq. metres (442.4 sq. feet)



Call Wanstead - 020 8530 3741 ■ douglasallen.co.uk

- A private rental licensing scheme applies to some properties in this area, please contact us before proceeding
- Legal advice should be taken to verify fixtures/fittings, planning, alterations and/or lease details
- Appliances & services are untested, dimensions are approximate and floor plans are not to scale



53212078/20240419/LA/SP