



OVER 60?

Secure this property
for up to **59% less!**

Price

£275,000

Leasehold

2x  1x  1x 

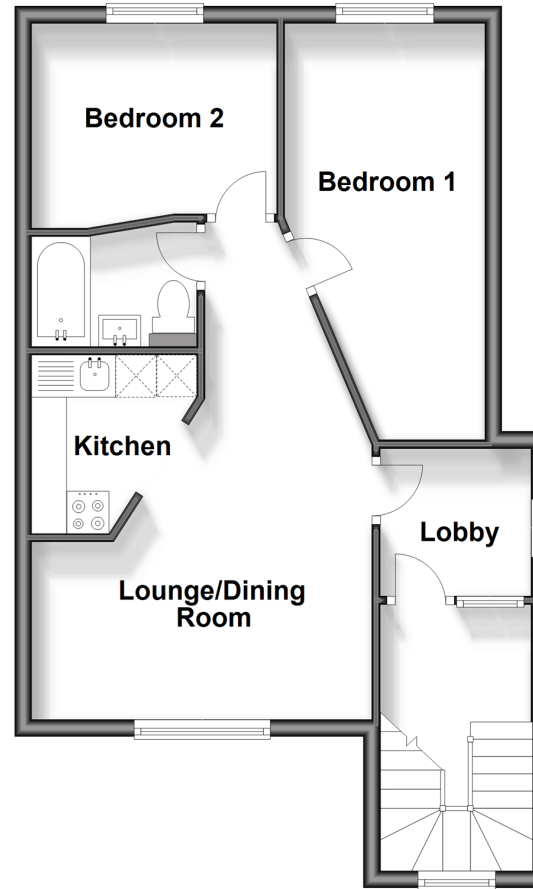
**Mallinson Court,
Brockway Close,
London, E11**

 **DOUGLAS
ALLEN**
Helping you move forwards



Third Floor

Approx. 43.4 sq. metres (467.3 sq. feet)



Accommodation

THIRD FLOOR

Lounge/Dining Room: 12'4 x 8'7 (3.76m x 2.62m)

Kitchen: 6'7 x 4'2 (2.01m x 1.27m)

Bedroom 1: 13'4 x 7'7 (4.07m x 2.31m)

Bedroom 2: 8'5 x 8'5 (2.57m x 2.57m)

Bathroom

OUTSIDE

Communal Gardens

Communal Parking

Main features

- Chain free 2 bedroom purpose built flat
- Perfect for first time buyers
- Conveniently surrounded by local amenities
- Residential parking available with this property
- Located within walking distance of Leytonstone Central Line Station

Call Wanstead - 020 8530 3741 ■ douglasallen.co.uk

- A private rental licensing scheme applies to some properties in this area, please contact us before proceeding
- Appliances & services are untested, dimensions are approximate and floor plans are not to scale

- Legal advice should be taken to verify fixtures/fittings, planning, alterations and/or lease details
- Through a Homewise Home For Life Plan people aged 60+ can secure this property for up to 59% less, by purchasing a Lifetime Lease.



53212004/20240608/LA/RUM