



Price

£210,000

Leasehold

1x  1x  1x 

Mayville Road, London,  
E11

**OVER 60?**

Secure this property  
for up to **59% less!**

 **DOUGLAS  
ALLEN**  
Helping you move forwards

## Main features

- Victorian first floor one bedroom Apartment
- No Onward Chain
- Cash buyers only
- Repainted throughout
- Potential to convert the loft STP & Freeholder Consent
- Lounge/Diner

## Accommodation

### FIRST FLOOR

Landing: 15'1 x 4'9 (4.60m x 1.45m)

Lounge/Diner: 14'6 x 13'1 at widest point (4.42m x 3.99m)

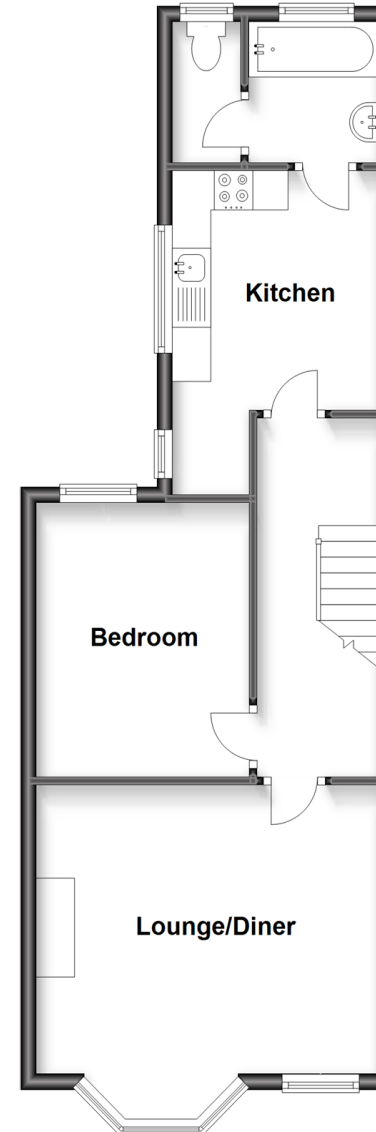
Kitchen: 10'0 x 8'7 (3.05m x 2.62m)

Bedroom: 11'7 x 9'2 (3.53m x 2.80m)

Bathroom

Separate Toilet

**First Floor**  
Approx. 48.6 sq. metres (523.5 sq. feet)



**Call Wanstead - 020 8530 3741 ■ [douglasallen.co.uk](http://douglasallen.co.uk)**

- A private rental licensing scheme applies to some properties in this area, please contact us before proceeding
- Appliances & services are untested, dimensions are approximate and floor plans are not to scale

- Legal advice should be taken to verify fixtures/fittings, planning, alterations and/or lease details
- Through a Homewise Home For Life Plan people aged 60+ can secure this property for up to 59% less, by purchasing a Lifetime Lease.



53212096/20240522/SP/LR