



**Price**  
**£575,000**

**Leasehold**

2x  2x  1x 

**La Vista, Forest View,  
Chingford, E4**

 **DOUGLAS  
ALLEN**  
Helping you move forwards





## Main features

- Stunning two-bedroom, two-bathroom apartment overlooking Chingford Golf Course
- Double bedrooms, including en-suite
- Well-presented interiors throughout
- Bright living area
- Ideally located for Chingford's amenities
- Excellent transport links close by

## Accommodation

### THIRD FLOOR

Lounge/Diner/Kitchen: 29'10 x 27'4 (9.10m x 8.34m)

Bedroom 1: 17'4 x 16'1 (5.29m x 4.91m)

En Suite Shower Room

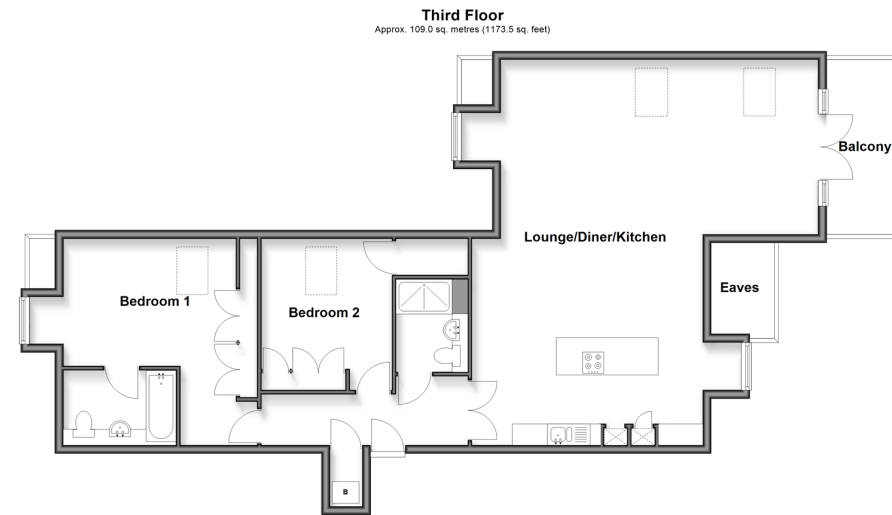
Bedroom 2: 11'7 x 10'0 (3.53m x 3.05m)

Shower Room

### OUTSIDE

Balcony

Communal Gardens



**Call Walthamstow - 020 8509 0092 ■ [douglasallen.co.uk](http://douglasallen.co.uk)**

- A private rental licensing scheme applies to some properties in this area, please check with the Local Authority before proceeding
- Legal advice should be taken to verify fixtures/fittings, planning, alterations and/or lease details
- Appliances & services are untested, dimensions are approximate and floor plans are not to scale



53118086/20251206/KS/SC