



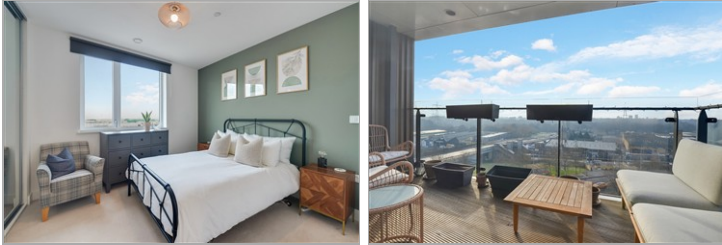
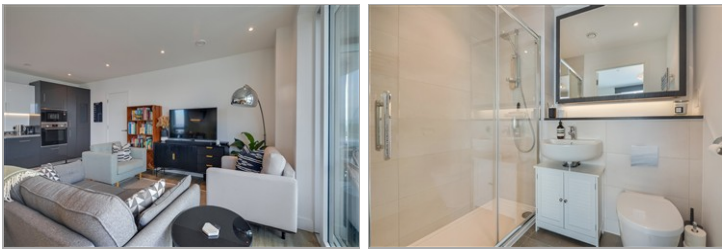
Price

£425,000

Leasehold

2x  2x  1x 

**Beck Square, Leyton,
E10**



Main features

- Spacious double bedrooms
- En suite to main bedroom
- Stylish modern kitchen and bathrooms
- Bright open-plan living area
- Sought-after Beck Square development
- Excellent local amenities and transport links

Accommodation

SIXTH FLOOR

Lounge/Diner/Kitchen: 20'7 x 16'3
(6.28m x 4.96m)

Bedroom 1: 14'2 x 11'0 (4.32m x 3.36m)

En Suite

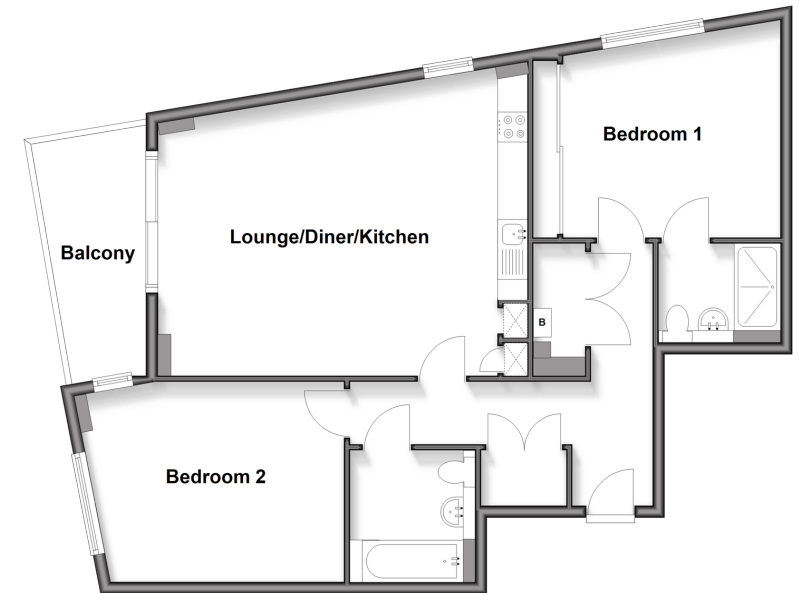
Bedroom 2: 11'2 x 10'2 (3.41m x 3.10m)

Bathroom: 7'4 x 6'9 (2.24m x 2.06m)

OUTSIDE

Balcony off Lounge

Sixth Floor
Approx. 80.1 sq. metres (862.0 sq. feet)



Call Walthamstow - 020 8509 0092 ■ douglasallen.co.uk

- A private rental licensing scheme applies to some properties in this area, please check with the Local Authority before proceeding
- Legal advice should be taken to verify fixtures/fittings, planning, alterations and/or lease details
- Appliances & services are untested, dimensions are approximate and floor plans are not to scale



53118076/20251108/KS/SC