



Guide Price
£400,000

Leasehold

2x  1x  1x 

**Arundel House,
Thornbury Way,
Walthamstow, E17**



Main features

- Modern development
- Large open plan living
- Allocated parking space
- Generously sized bedrooms and larger than average balcony
- Next to Walthamstow Academy and Kingfisher Sports Ground

Accommodation

THIRD FLOOR

Lounge/Kitchen: 19'4 x 15'1 (5.90m x 4.60m)

Bedroom 1: 16'5 x 10'6 (5.01m x 3.20m)

Bedroom 2: 11'10 x 9'6 (3.61m x 2.90m)

Bathroom

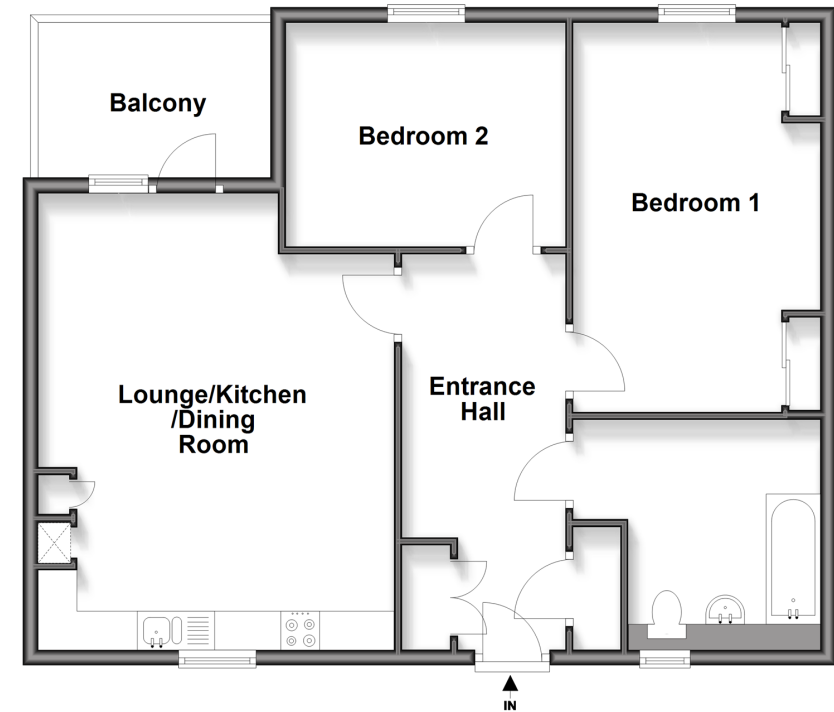
OUTSIDE

Balcony

Communal Gardens

Third Floor

Approx. 74.6 sq. metres (803.0 sq. feet)



Call Walthamstow - 020 8509 0092 ■ douglasallen.co.uk

- A private rental licensing scheme applies to some properties in this area, please contact us before proceeding
- Legal advice should be taken to verify fixtures/fittings, planning, alterations and/or lease details
- Appliances & services are untested, dimensions are approximate and floor plans are not to scale



53117976/20250809/KS/DM