



Price

£325,000

Leasehold

2x  1x  1x 

**St. Helen's Place,
Leyton, Waltham Forest,
E10**

OVER 60?

Secure this property
for up to **59% less!**

 **DOUGLAS
ALLEN**
Helping you move forwards



Main features

- Excellent size bedrooms in a well-maintained development
- Spacious lounge
- Presented in good decorative order throughout
- Modern fitted kitchen and well-appointed bathroom
- Allocated residents parking and secure bike storage

Accommodation

SECOND FLOOR

Hallway

Living Area: 19'1 x 15'1 (5.82m x 4.60m)

Bedroom 1: 13'2 x 11'1 (4.02m x 3.38m)

Bedroom 2: 14'0 x 10'0 (4.27m x 3.05m)

Bathroom

OUTSIDE

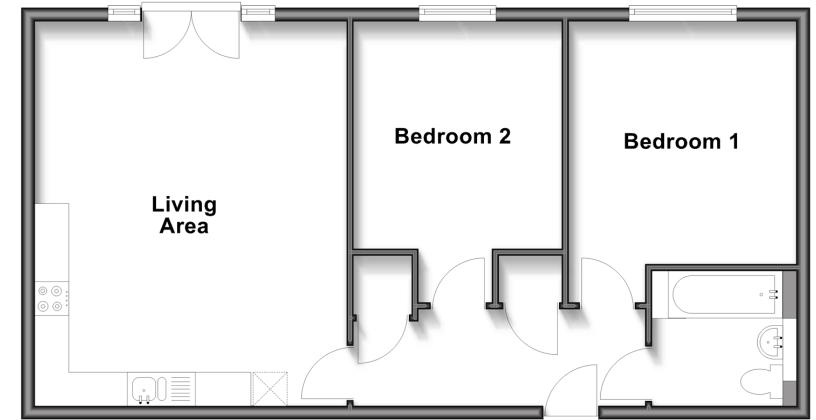
Juliette Balcony

Bike Storage

Allocated Residents Parking

Second Floor

Approx. 64.0 sq. metres (688.7 sq. feet)



Call Walthamstow - 020 8509 0092 ■ douglasallen.co.uk

- A private rental licensing scheme applies to some properties in this area, please contact us before proceeding
- Legal advice should be taken to verify fixtures/fittings, planning, alterations and/or lease details
- Appliances & services are untested, dimensions are approximate and floor plans are not to scale
- Through a Homewise Home For Life Plan people aged 60+ can secure this property for up to 59% less, by purchasing a Lifetime Lease.

