



Price
£635,000

Freehold

3x  1x  1x 

**Overton Road, Leyton,
E10**



Main features

- Spacious and bright lounge area
- Private rear garden
- Chain-free period property with character features
- Moments from local shops, cafes and entertainment venues
- Excellent transport links nearby for easy commuting
- Family-friendly neighbourhood

Accommodation

GROUND FLOOR

Lounge/Dining Room: 25'9 x 10'5
(7.85m x 3.18m)

Kitchen/Breakfast Room: 15'3 x 15'1
(4.65m x 4.60m)

Toilet

FIRST FLOOR

Bedroom 1: 12'9 x 10'4 (3.89m x 3.15m)

Bedroom 2: 10'4 x 10'3 (3.15m x 3.13m)

Bedroom 3: 9'0 x 6'0 (2.75m x 1.83m)

Bathroom

OUTSIDE

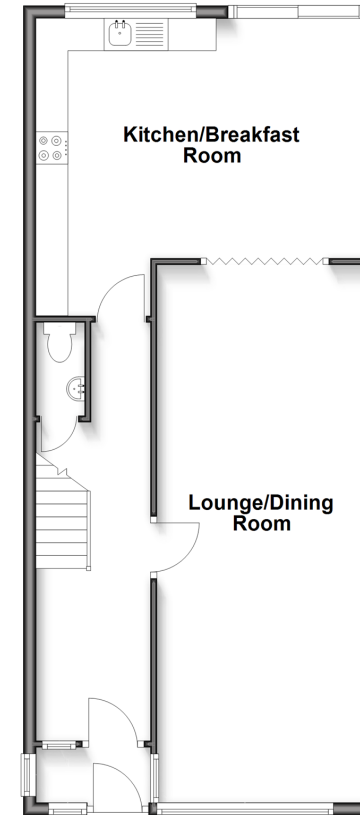
Front Garden

Rear Garden

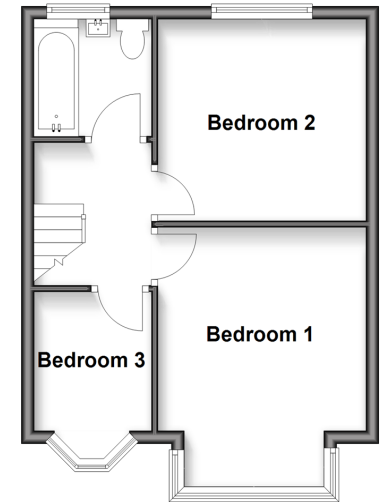
Call Walthamstow - 020 8509 0092 ■ douglasallen.co.uk

- A private rental licensing scheme applies to some properties in this area, please contact us before proceeding
- Legal advice should be taken to verify fixtures/fittings, planning, alterations and/or lease details
- Appliances & services are untested, dimensions are approximate and floor plans are not to scale

Ground Floor
Approx. 63.0 sq. metres (678.3 sq. feet)



First Floor
Approx. 35.0 sq. metres (377.0 sq. feet)



53117874/20250604/KS/SC