



Guide Price
£425,000

Leasehold

2x  2x  1x 

**Beck Square, Leyton,
E10**



Main features

- Spacious double bedrooms, one en-suite
- Bright and sunny lounge area
- Stunning open-plan kitchen and dining space
- Beautiful private balcony
- Contemporary design throughout
- Ideally located in Leyton, close to all major amenities

Accommodation

SIXTH FLOOR

Lounge/Kitchen/Dining Room: 20'8 x 15'8 (6.30m x 4.78m)

Bedroom 1: 13'6 x 12'4 (4.12m x 3.76m)

En-Suite

Bedroom 2: 12'6 x 11'0 (3.81m x 3.36m)

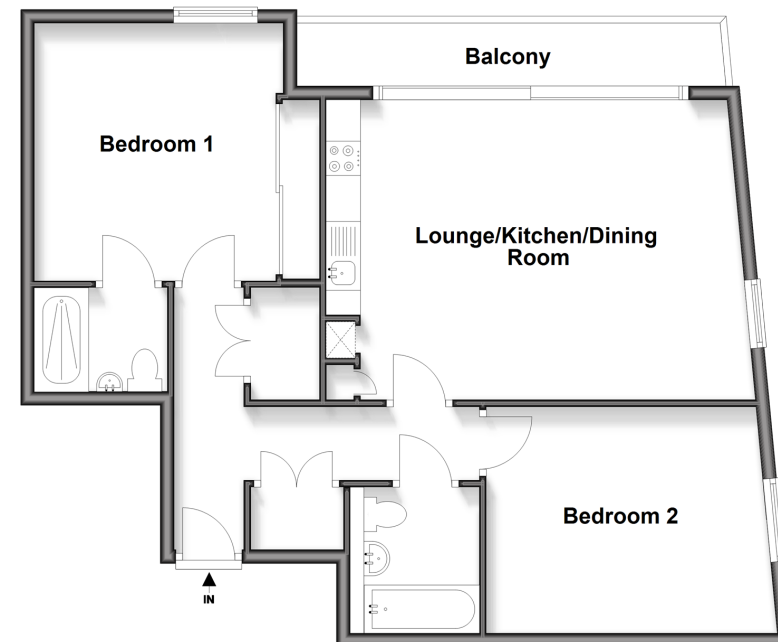
Bathroom

OUTSIDE

Balcony off Lounge

Communal Gardens

Sixth Floor
Approx. 80.6 sq. metres (867.2 sq. feet)



Call Walthamstow - 020 8509 0092 ■ douglasallen.co.uk

- A private rental licensing scheme applies to some properties in this area, please contact us before proceeding
- Legal advice should be taken to verify fixtures/fittings, planning, alterations and/or lease details
- Appliances & services are untested, dimensions are approximate and floor plans are not to scale



53117777/20250513/KS/S