



**Price**  
**£325,000**

**Leasehold**

2x  1x  1x 

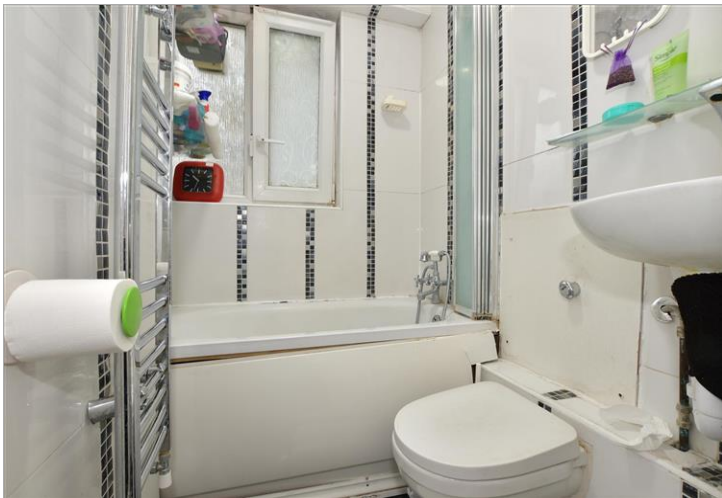
**The Mount, Upper  
Clapton Road, Clapton,  
E5**

**OVER 60?**

Secure this property  
for up to **59% less!**

 **DOUGLAS  
ALLEN**  
Helping you move forwards





## Main features

- **Fantastic rental investment opportunity**
- **Double bedrooms**
- **Very central location**
- **Must be seen!**
- **Very conveniently located for local shops, bars & restaurants**

## Accommodation

### THIRD FLOOR

Lounge/Dining Room: 17'6 x 12'7  
(5.34m x 3.84m)

Kitchen: 10'1 x 9'0 (3.08m x 2.75m)

Bedroom 1: 12'4 x 11'2 (3.76m x 3.41m)

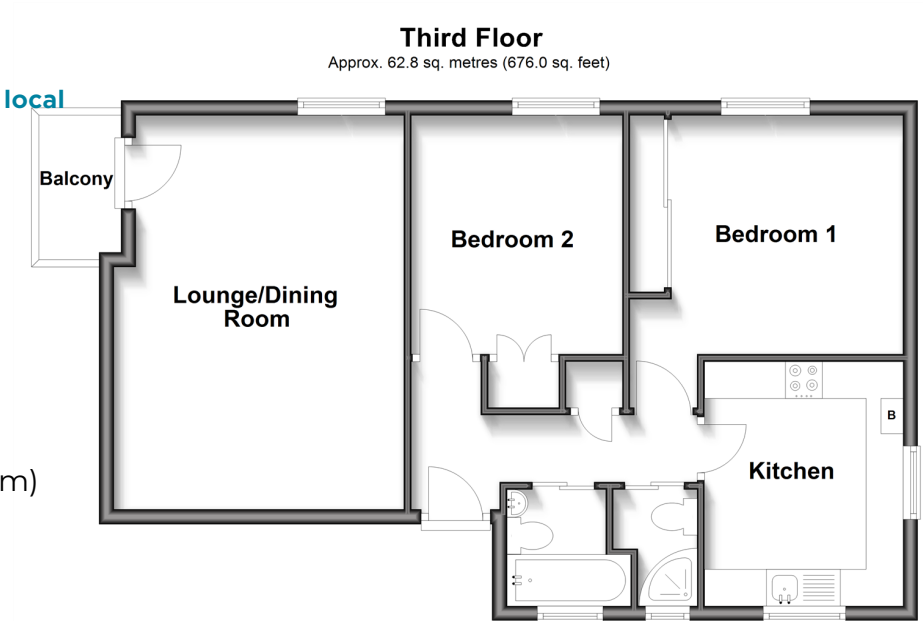
Bedroom 2: 10'7 x 9'3 (3.23m x 2.82m)

Bathroom

### OUTSIDE

Balcony

Communal Gardens



**Call Walthamstow - 020 8509 0092 ■ [douglasallen.co.uk](http://douglasallen.co.uk)**

- A private rental licensing scheme applies to some properties in this area, please contact us before proceeding
- Legal advice should be taken to verify fixtures/fittings, planning, alterations and/or lease details
- Appliances & services are untested, dimensions are approximate and floor plans are not to scale
- Through a Homewise Home For Life Plan people aged 60+ can secure this property for up to 59% less, by purchasing a Lifetime Lease.



53117797/20250220/KS/S