



OVER 60?

Secure this property
for up to **59% less!**

Price

£475,000

Leasehold

2x  1x  1x 

**Fleeming Road,
Walthamstow, E17**



**DOUGLAS
ALLEN**

Helping you move forwards



Main features

- Warner flat in an excellent location
- Own rear garden
- Long lease
- Wealth of period features throughout
- Must be seen!

Accommodation

GROUND FLOOR

Living Room: 13'6 x 10'6 (4.12m x 3.20m)

Kitchen: 8'3 x 7'8 (2.52m x 2.34m)

Bedroom 1: 11'3 x 11'1 (3.43m x 3.38m)

Bedroom 2: 10'6 x 10'4 (3.20m x 3.15m)

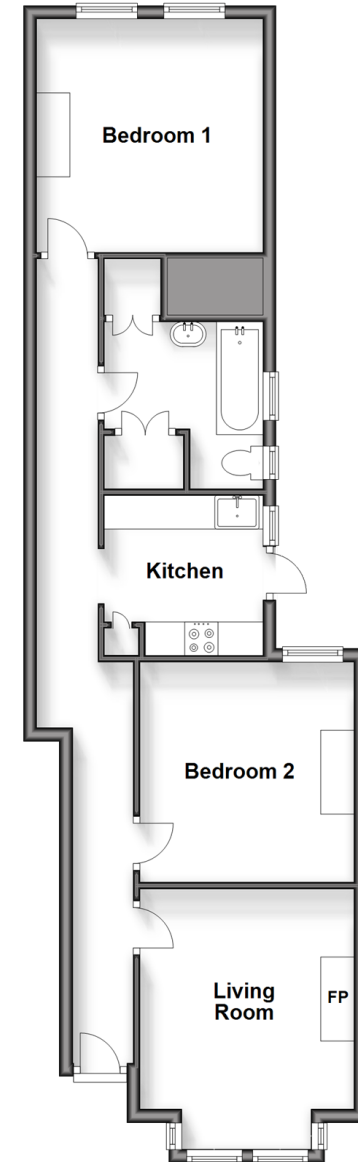
Bathroom: 7'8 x 7'6 (2.34m x 2.29m)

OUTSIDE

Rear Garden

Ground Floor

Approx. 60.6 sq. metres (652.7 sq. feet)



Call Walthamstow - 020 8509 0092 ■ douglasallen.co.uk

- A private rental licensing scheme applies to some properties in this area, please contact us before proceeding
- Legal advice should be taken to verify fixtures/fittings, planning, alterations and/or lease details
- Appliances & services are untested, dimensions are approximate and floor plans are not to scale
- Through a Homewise Home For Life Plan people aged 60+ can secure this property for up to 59% less, by purchasing a Lifetime Lease.

