



**Price**  
**£425,000**

**Leasehold**

2x  1x  1x 

**Riverside Close,  
Hackney, E5**

**OVER 60?**

Secure this property  
for up to **59% less!**

 **DOUGLAS  
ALLEN**  
Helping you move forwards



## Main features

- Refurbished apartment
- Riverside location
- Lee Valley Park
- Off street parking
- Modern kitchen and trendy bathroom
- Close to transport links, shops and cafes

## Accommodation

### SECOND FLOOR

Lounge/Diner: 18'3 x 9'8 (5.57m x 2.95m)

Kitchen: 8'0 x 6'1 (2.44m x 1.86m)

Bedroom 1: 14'6 x 8'10 (4.42m x 2.69m)

Bedroom 2: 11'6 x 7'0 (3.51m x 2.14m)

Bathroom: 6'2 x 5'2 (1.88m x 1.58m)

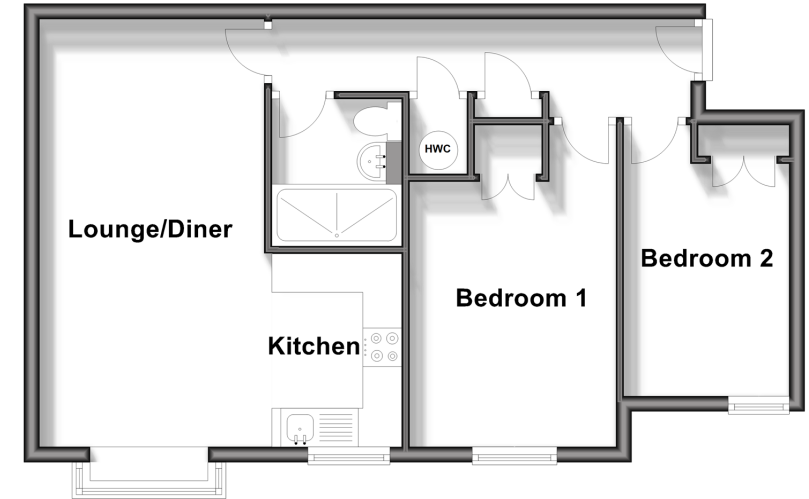
### OUTSIDE

Allocated Parking

Bike Storage

### Second Floor

Approx. 44.5 sq. metres (478.5 sq. feet)



**Call Walthamstow - 020 8509 0092 ■ [douglasallen.co.uk](http://douglasallen.co.uk)**

- A private rental licensing scheme applies to some properties in this area, please contact us before proceeding
- Legal advice should be taken to verify fixtures/fittings, planning, alterations and/or lease details
- Appliances & services are untested, dimensions are approximate and floor plans are not to scale
- Through a Homewise Home For Life Plan people aged 60+ can secure this property for up to 59% less, by purchasing a Lifetime Lease.



53117759/20250125/KS/DM