



Guide Price
£700,000

Freehold

3x  1x  1x 

**Sunset Avenue,
Chingford, E4**

OVER 60?

Secure this property
for up to **59% less!**

 **DOUGLAS
ALLEN**
Helping you move forwards



Main features

- Chalet style bungalow
- Fantastic condition throughout
- Off street parking
- Located in one of Chingford's premier roads
- Close to all local amenities including shops, bars & restaurants

Accommodation

GROUND FLOOR

Lounge/Dining Area: 21'6 x 10'8 (6.56m x 3.25m)

Kitchen/Breakfast Area: 14'9 x 9'6 (4.50m x 2.90m)

Bedroom 2: 13'6 x 10'5 (4.12m x 3.18m)

Bedroom 3: 9'8 x 9'7 (2.95m x 2.92m)

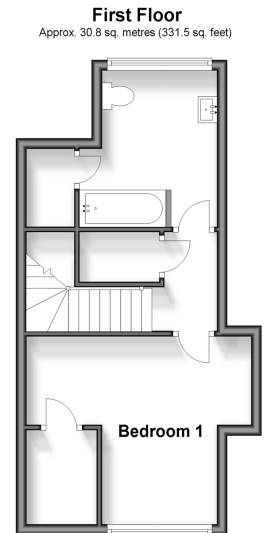
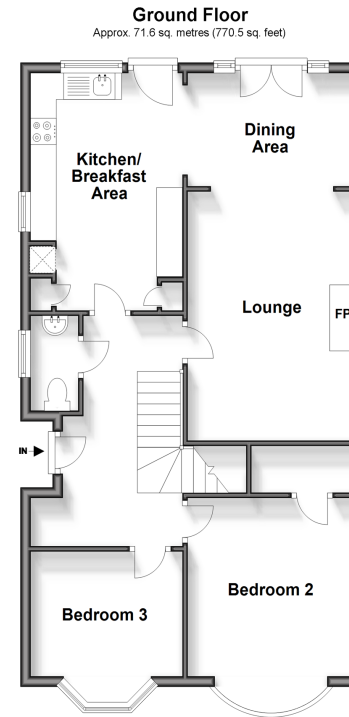
FIRST FLOOR

Bedroom 1: 14'4 x 10'9 (4.37m x 3.28m)

Bathroom: 9'6 x 7'4 (2.90m x 2.24m)

OUTSIDE

Rear Garden
Driveway



Call Walthamstow - 020 8509 0092 ■ douglasallen.co.uk

- A private rental licensing scheme applies to some properties in this area, please contact us before proceeding
- Legal advice should be taken to verify fixtures/fittings, planning, alterations and/or lease details
- Appliances & services are untested, dimensions are approximate and floor plans are not to scale
- Through a Homewise Home For Life Plan people aged 60+ can secure this property for up to 59% less, by purchasing a Lifetime Lease.



53117726/20250317/DM/S