



**OVER 60?**

Secure this property  
for up to **59% less!**

**Price**

**£525,000**

**Freehold**

3x  2x  2x 

**Burnham Road,  
Chingford, London, E4**

 **DOUGLAS  
ALLEN**  
Helping you move forwards





## Main features

- End of terrace house
- Driveway and garage
- Large garden
- Through lounge
- Potential to extend (STPP)
- Easy access to transport links and local schools

## Accommodation

### GROUND FLOOR

Lounge: 28'2 x 11'8 (8.59m x 3.56m)  
 Dining Area: 10'3 x 6'8 (3.13m x 2.03m)  
 Kitchen/Breakfast Area: 14'3 x 10'3 (4.35m x 3.13m)

Toilet

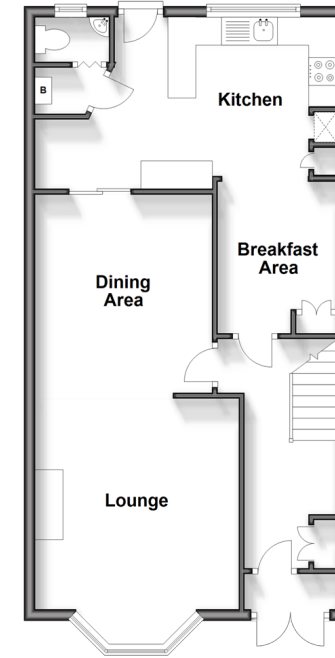
### FIRST FLOOR

Bedroom 1: 16'3 x 9'0 (4.96m x 2.75m)  
 Bedroom 2: 13'6 x 11'0 (4.12m x 3.36m)  
 Bedroom 3: 9'5 x 9'0 (2.87m x 2.75m)  
 Bathroom

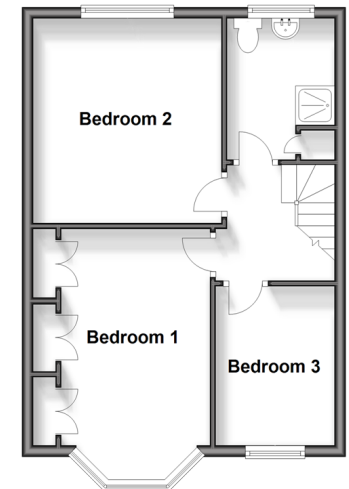
### OUTSIDE

Driveway  
 Garage  
 Rear Garden

**Ground Floor**  
 Approx. 57.5 sq. metres (618.7 sq. feet)



**First Floor**  
 Approx. 41.6 sq. metres (448.0 sq. feet)



**Call Walthamstow - 020 8509 0092 ■ [douglasallen.co.uk](http://douglasallen.co.uk)**

- A private rental licensing scheme applies to some properties in this area, please contact us before proceeding
- Legal advice should be taken to verify fixtures/fittings, planning, alterations and/or lease details
- Appliances & services are untested, dimensions are approximate and floor plans are not to scale
- Through a Homewise Home For Life Plan people aged 60+ can secure this property for up to 59% less, by purchasing a Lifetime Lease.