



Price
£625,000

Freehold

2x  1x  1x 

**Gloucester Road,
Walthamstow, E17**

OVER 60?

Secure this property
for up to **59% less!**

 **DOUGLAS
ALLEN**
Helping you move forwards



Main features

- Delightful 2 bedroom Victorian terraced home
- Quiet residential street
- Ready to move into
- Period features
- Located close to Blackhorse Road tube station

Accommodation

GROUND FLOOR

Entrance Hall

Lounge: 11'2 x 9'9 (3.41m x 2.97m)

Dining Area: 10'5 x 7'9 (3.18m x 2.36m)

Kitchen: 14'8 x 6'9 (4.47m x 2.06m)

SPLIT LEVEL FIRST FLOOR

Bedroom 1: 13'2 x 11'2 (4.02m x 3.41m)

Bedroom 2: 11'2 x 7'8 (3.41m x 2.34m)

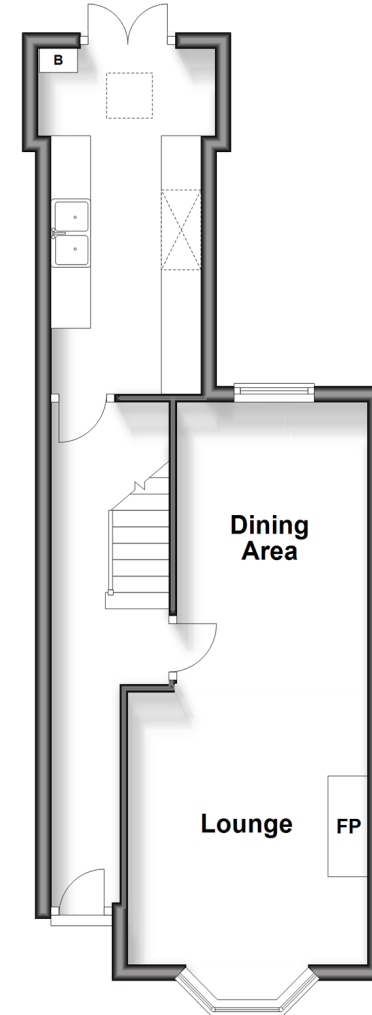
Bathroom: 9'7 x 6'3 (2.92m x 1.91m)

OUTSIDE

Rear Garden

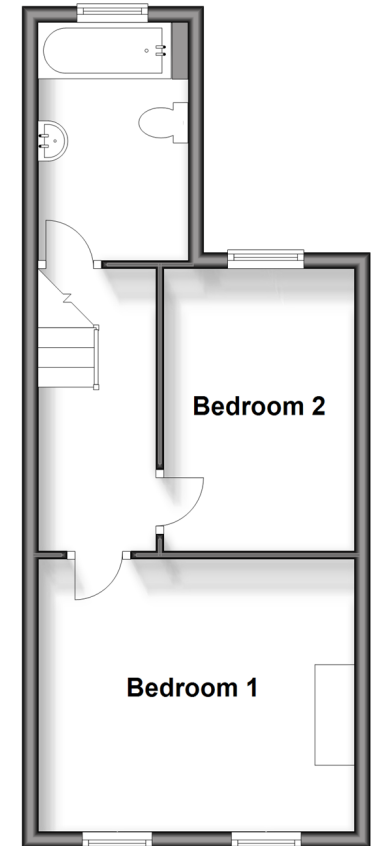
Ground Floor

Approx. 36.0 sq. metres (388.0 sq. feet)



Split Level First Floor

Approx. 33.7 sq. metres (362.9 sq. feet)



Call Walthamstow - 020 8509 0092 ■ douglasallen.co.uk

- A private rental licensing scheme applies to some properties in this area, please contact us before proceeding
- Legal advice should be taken to verify fixtures/fittings, planning, alterations and/or lease details
- Appliances & services are untested, dimensions are approximate and floor plans are not to scale
- Through a Homewise Home For Life Plan people aged 60+ can secure this property for up to 59% less, by purchasing a Lifetime Lease.



53117618/20250215/KS/RW