



Price
£550,000

Freehold

3x  2x  2x 

**Sturge Avenue,
Walthamstow, London,
E17**

OVER 60?

Secure this property
for up to **59% less!**

 **DOUGLAS
ALLEN**
Helping you move forwards



Main features

- Chain free property
- Double fronted house
- End of terrace
- Two shower rooms
- Large garden and potential to extend (STPP)
- Close to Wood Street Station, A406 and M11

Accommodation

GROUND FLOOR

Lounge: 11'5 x 9'5 (3.48m x 2.87m)

Kitchen/Diner: 16'6 x 13'6 (5.03m x 4.12m)

Family Area: 20'0 x 9'6 (6.10m x 2.90m)

Bathroom: 9'8 x 7'5 (2.95m x 2.26m)

FIRST FLOOR

Bedroom 1: 12'7 x 9'4 (3.84m x 2.85m)

Bedroom 2: 12'3 x 9'7 (3.74m x 2.92m)

Bedroom 3: 9'6 x 6'10 (2.90m x 2.08m)

Bathroom: 7'10 x 4'9 (2.39m x 1.45m)

OUTSIDE

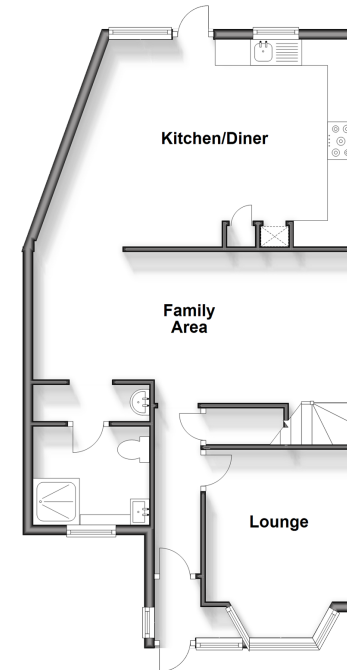
Front Garden

Rear Garden

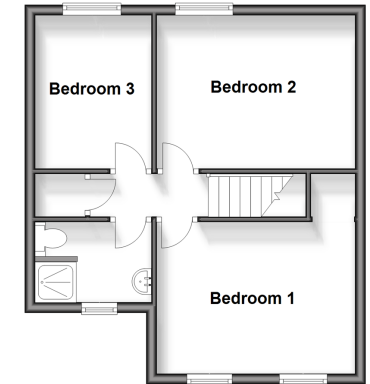
Call Walthamstow - 020 8509 0092 ■ douglasallen.co.uk

- A private rental licensing scheme applies to some properties in this area, please contact us before proceeding
- Legal advice should be taken to verify fixtures/fittings, planning, alterations and/or lease details
- Appliances & services are untested, dimensions are approximate and floor plans are not to scale
- Through a Homewise Home For Life Plan people aged 60+ can secure this property for up to 59% less, by purchasing a Lifetime Lease.

Ground Floor
Approx. 63.4 sq. metres (682.7 sq. feet)



First Floor
Approx. 40.0 sq. metres (430.2 sq. feet)



53117651/20241102/KS/DM