



Guide Price
£300,000

Leasehold

1x  1x  1x 

**Connaught Road,
Walthamstow, E17**

OVER 60?

Secure this property
for up to **59% less!**

 **DOUGLAS
ALLEN**
Helping you move forwards



Main features

- This first floor apartment is offered chain-free
- Private garden
- Large kitchen
- Good size reception
- Close to Walthamstow Central Station and local amenities

Accommodation

FIRST FLOOR

Entrance hall

Lounge/Dining Area: 14'0 x 9'7
(4.27m x 2.92m)

Kitchen: 9'4 x 9'3 (2.85m x 2.82m)

Bedroom: 12'8 x 9'7 (3.86m x 2.92m)

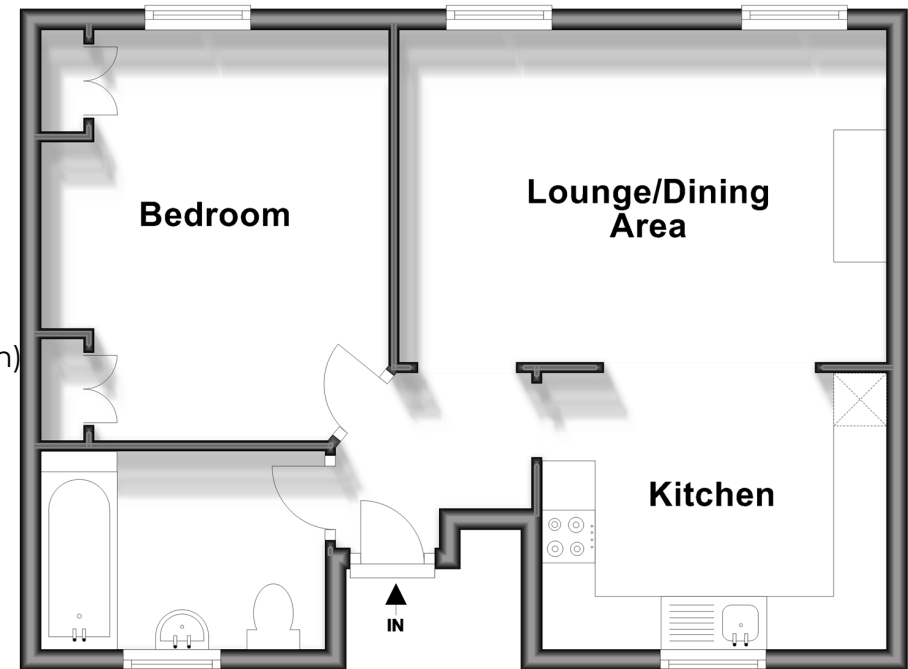
Bathroom: 8'8 x 6'1 (2.64m x 1.86m)

OUTSIDE

Rear Garden

First Floor

Approx. 44.5 sq. metres (479.5 sq. feet)



Call Walthamstow - 020 8509 0092 ■ douglasallen.co.uk

- A private rental licensing scheme applies to some properties in this area, please contact us before proceeding
- Legal advice should be taken to verify fixtures/fittings, planning, alterations and/or lease details
- Appliances & services are untested, dimensions are approximate and floor plans are not to scale
- Through a Homewise Home For Life Plan people aged 60+ can secure this property for up to 59% less, by purchasing a Lifetime Lease.



53117646/20250405/KS/DM