

Guide Price
£415,000

Leasehold

2x  2x  1x 

**Siskin Apartments,
Dunedin Road, Leyton,
E10**

OVER 60?

Secure this property
for up to **59% less!**

 **DOUGLAS
ALLEN**
Helping you move forwards



Main features

- Large private terrace, winter garden
- Two double bedrooms, one en-suite
- Communal gardens
- Great transport links
- Easy access to Westfield Stratford
- Secure underground parking

Accommodation

GROUND FLOOR

Lounge/Kitchen/Dining Room: 19'8 x 12'7 (6.00m x 3.84m)

Bedroom 1: 14'10 x 13'5 (4.52m x 4.09m)

En Suite: 5'10 x 4'9 (1.78m x 1.45m)

Bedroom 2: 12'1 x 7'10 (3.69m x 2.39m)

Bathroom: 7'8 x 7'1 (2.34m x 2.16m)

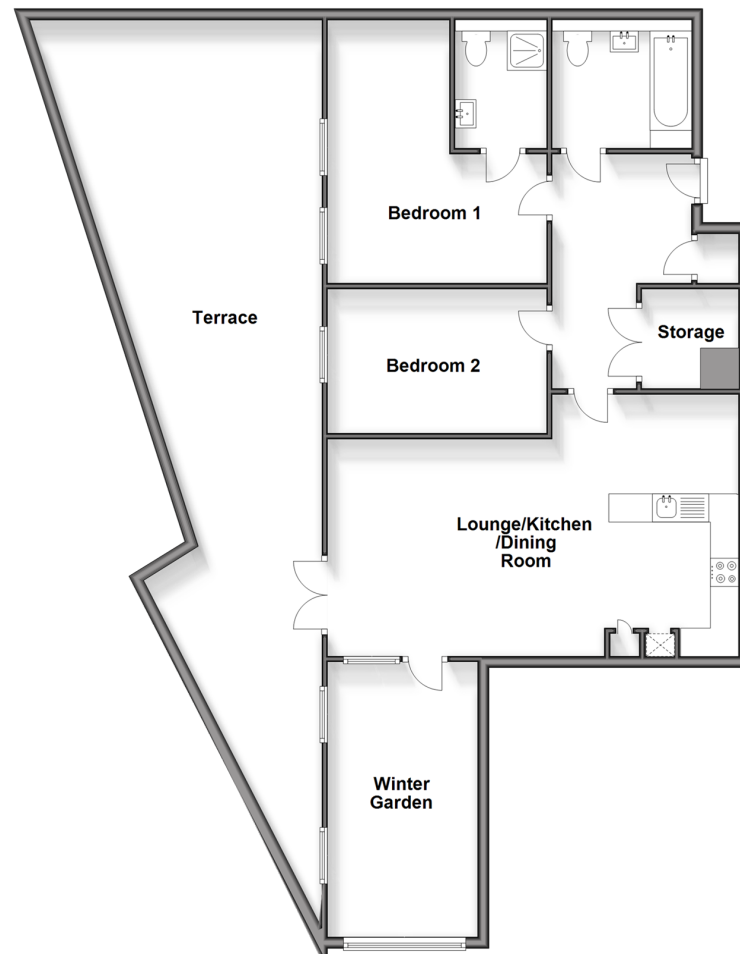
OUTSIDE

Balcony: 16'6 x 8'2 (5.03m x 2.49m)

Communal Gardens

Allocated Parking

Ground Floor
Approx. 79.1 sq. metres (851.7 sq. feet)



Call Walthamstow - 020 8509 0092 ■ douglasallen.co.uk

- A private rental licensing scheme applies to some properties in this area, please contact us before proceeding
- Legal advice should be taken to verify fixtures/fittings, planning, alterations and/or lease details
- Appliances & services are untested, dimensions are approximate and floor plans are not to scale
- Through a Homewise Home For Life Plan people aged 60+ can secure this property for up to 59% less, by purchasing a Lifetime Lease.

