



Price

£385,000

Leasehold

2x  1x  1x 

Spring House, Fulbourne
Road, Walthamstow,
E17



Main features

- Stunning first floor apartment
- Lift access
- Balcony off the bedrooms
- Communal parking situated to the rear
- Close to Wood Street station
- Shared ownership option 65%

Accommodation

FIRST FLOOR

Hallway

Living Area: 30'7 x 10'5 (9.33m x 3.18m)

Bedroom 1: 17'2 x 8'10 (5.24m x 2.69m)

Bedroom 2: 14'7 x 9'4 (4.45m x 2.85m)

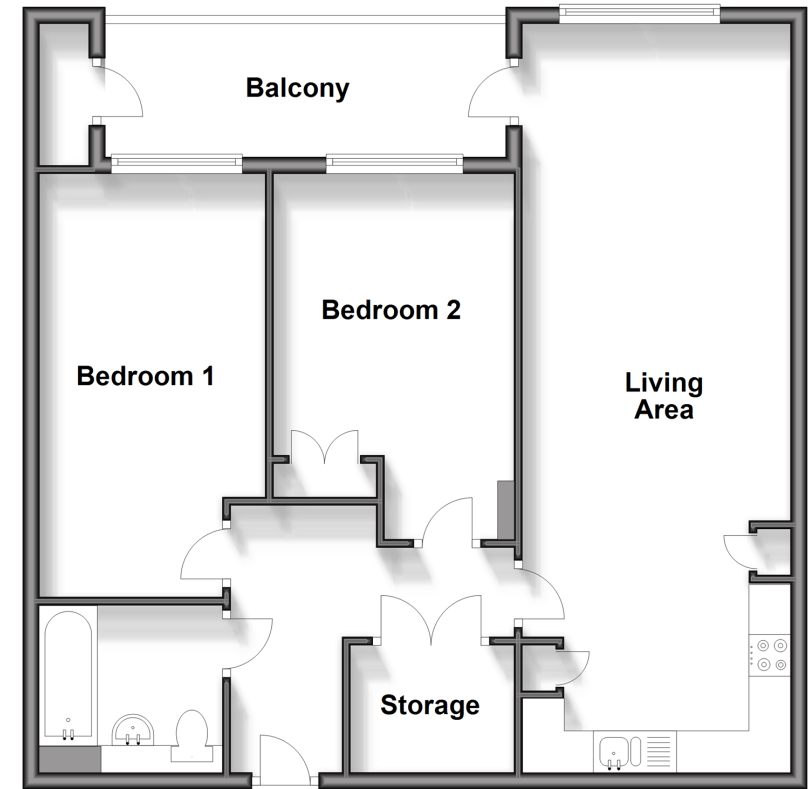
Bathroom: 13'3 x 7'2 (4.04m x 2.19m)

OUTSIDE

Balcony: 16'0 x 6'0 (4.88m x 1.83m)

Communal Parking

First Floor
Approx. 71.6 sq. metres (770.5 sq. feet)



Call Walthamstow - 020 8509 0092 ■ douglasallen.co.uk

- A private rental licensing scheme applies to some properties in this area, please contact us before proceeding
- Legal advice should be taken to verify fixtures/fittings, planning, alterations and/or lease details
- Appliances & services are untested, dimensions are approximate and floor plans are not to scale



53117604/20240925/MS/RW