



Guide Price
£625,000

Freehold

3x  1x  2x 

**Peterborough Road,
Leyton, E10**

OVER 60?

Secure this property
for up to **59% less!**

 **DOUGLAS
ALLEN**
Helping you move forwards



Main features

- Chain-Free
- End of Terrace
- Large 1930's House
- Good Size Garden
- Close to Walthamstow Village and Local Schools
- Short Walk to Epping Forest

Accommodation

GROUND FLOOR

Lounge: 18'8 x 14'2 (5.69m x 4.32m)

Living Room: 14'6 x 12'3 (4.42m x 3.74m)

Kitchen: 9'9 x 7'9 (2.97m x 2.36m)

Cloakroom: 7'1 x 2'6 (2.16m x 0.76m)

FIRST FLOOR

Bedroom 1: 14'7 x 10'1 (4.45m x 3.08m)

Bedroom 2: 14'3 x 9'1 (4.35m x 2.77m)

Bedroom 3: 8'4 x 7'11 (2.54m x 2.41m)

Bathroom

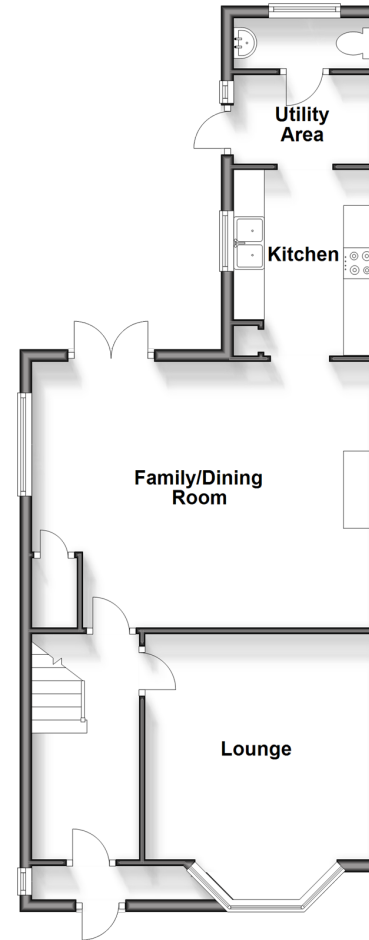
OUTSIDE

Rear Garden

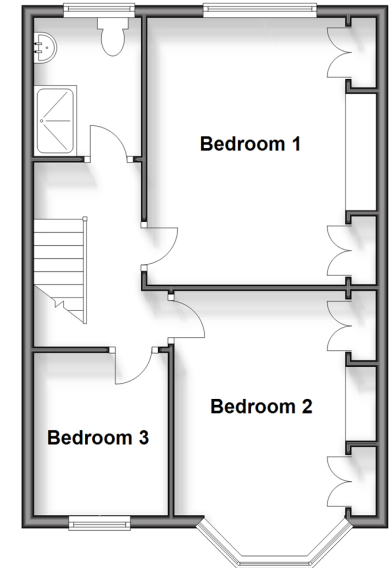
Call Walthamstow - 020 8509 0092 ■ douglasallen.co.uk

- A private rental licensing scheme applies to some properties in this area, please contact us before proceeding
- Legal advice should be taken to verify fixtures/fittings, planning, alterations and/or lease details
- Appliances & services are untested, dimensions are approximate and floor plans are not to scale
- Through a Homewise Home For Life Plan people aged 60+ can secure this property for up to 59% less, by purchasing a Lifetime Lease.

Ground Floor
Approx. 59.8 sq. metres (643.9 sq. feet)



First Floor
Approx. 45.4 sq. metres (488.2 sq. feet)



53117568/20240730/KS/DM