



Guide Price
£850,000

Freehold

5x  2x  1x 

**Shernhall Street,
Walthamstow, E17**

 **DOUGLAS
ALLEN**
Helping you move forwards



Main features

- Simply stunning period family home
- Immaculate condition
- Solid wood floors throughout
- Low maintenance rear garden
- Borders both Walthamstow Village and Wood Street

Accommodation

GROUND FLOOR

Entrance Hall
 Lounge: 24'4 x 11'7 (7.42m x 3.53m)
 Kitchen/Dining Room: 15'3 x 8'9 (4.65m x 2.67m)
 Cloakroom

FIRST FLOOR

Landing
 Bedroom 3: 14'3 x 12'9 (4.35m x 3.89m)
 Bedroom 4: 10'11 x 8'3 (3.33m x 2.52m)
 Bedroom 5: 8'11 x 8'9 (2.72m x 2.67m)
 Bathroom

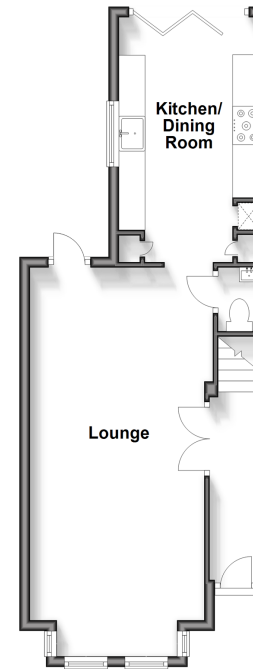
SECOND FLOOR

Bedroom 1: 18'7 x 12'2 (5.67m x 3.71m)
 En-Suite Shower Room
 Bedroom 2: 12'11 x 8'6 (3.94m x 2.59m)

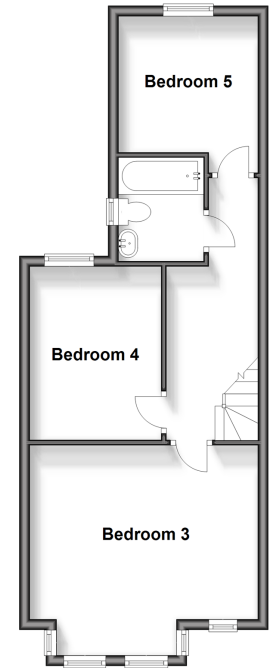
OUTSIDE

Front Garden
 Rear Garden

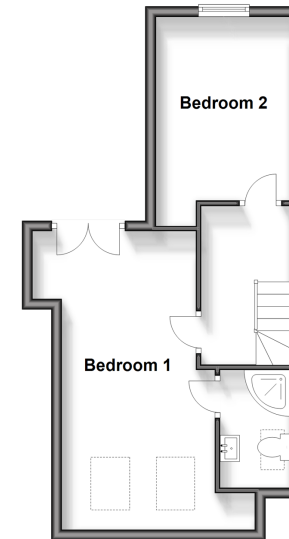
Ground Floor
 Approx. 42.8 sq. metres (460.5 sq. feet)



First Floor
 Approx. 43.6 sq. metres (469.0 sq. feet)



Second Floor
 Approx. 35.4 sq. metres (381.0 sq. feet)



Call Walthamstow - 020 8509 0092 ■ douglasallen.co.uk

- A private rental licensing scheme applies to some properties in this area, please contact us before proceeding
- Legal advice should be taken to verify fixtures/fittings, planning, alterations and/or lease details
- Appliances & services are untested, dimensions are approximate and floor plans are not to scale



53117508/20240608/KS/S