



**Price**

**£325,000**

**Leasehold**

1x  1x  1x 

**Markhouse Road,  
Walthamstow, E17**

**OVER 60?**

Secure this property  
for up to **59% less!**

 **DOUGLAS  
ALLEN**  
Helping you move forwards





## Main features

- First floor period converted flat
- Good decorative order throughout
- Good local amenities
- A short walk to the varied shopping facilities at Walthamstow Central
- Walking distance to the local transport links

## Accommodation

### FIRST FLOOR

Lounge/Diner: 15'11 x 14'1 (4.85m x 4.30m)

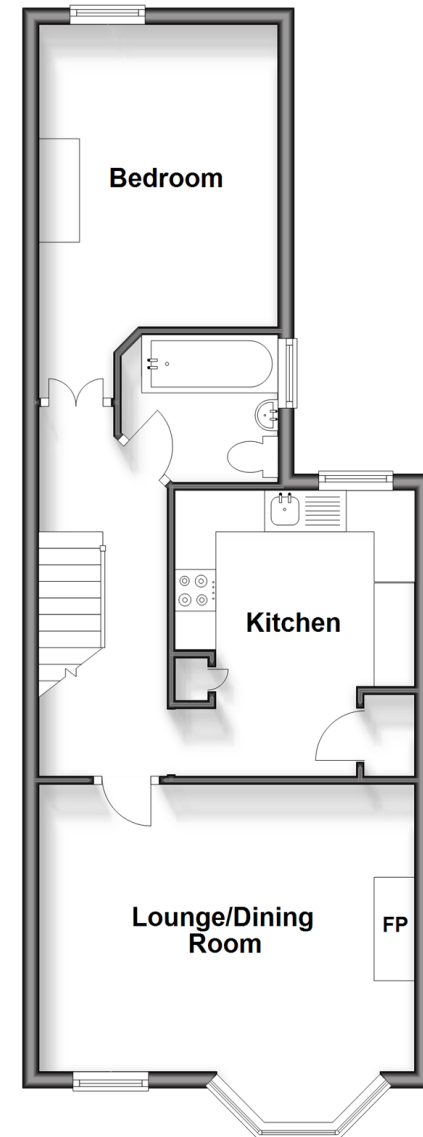
Kitchen: 11'4 x 9'7 (3.46m x 2.92m)

Bedroom: 12'0 x 9'7 (3.66m x 2.92m)

Bathroom: 6'5 x 5'8 (1.96m x 1.73m)

### First Floor

Approx. 49.1 sq. metres (528.8 sq. feet)



**Call Walthamstow - 020 8509 0092 ■ [douglasallen.co.uk](http://douglasallen.co.uk)**

- A private rental licensing scheme applies to some properties in this area, please contact us before proceeding
- Legal advice should be taken to verify fixtures/fittings, planning, alterations and/or lease details
- Appliances & services are untested, dimensions are approximate and floor plans are not to scale
- Through a Homewise Home For Life Plan people aged 60+ can secure this property for up to 59% less, by purchasing a Lifetime Lease.