



Guide Price
£800,000

Freehold

4x  2x  2x 

**Milton Road,
Walthamstow, E17**



Main features

- Charming Victorian family home
- A wealth of period features
- Chain free
- Can be extended subject to the usual permissions
- Fantastic location in the heart of Walthamstow

Accommodation

GROUND FLOOR

Lounge: 13'2 x 10'7 (4.02m x 3.23m)
 Kitchen/Diner: 14'6 x 12'3 (4.42m x 3.74m)
 Utility Room
 Bathroom

FIRST FLOOR

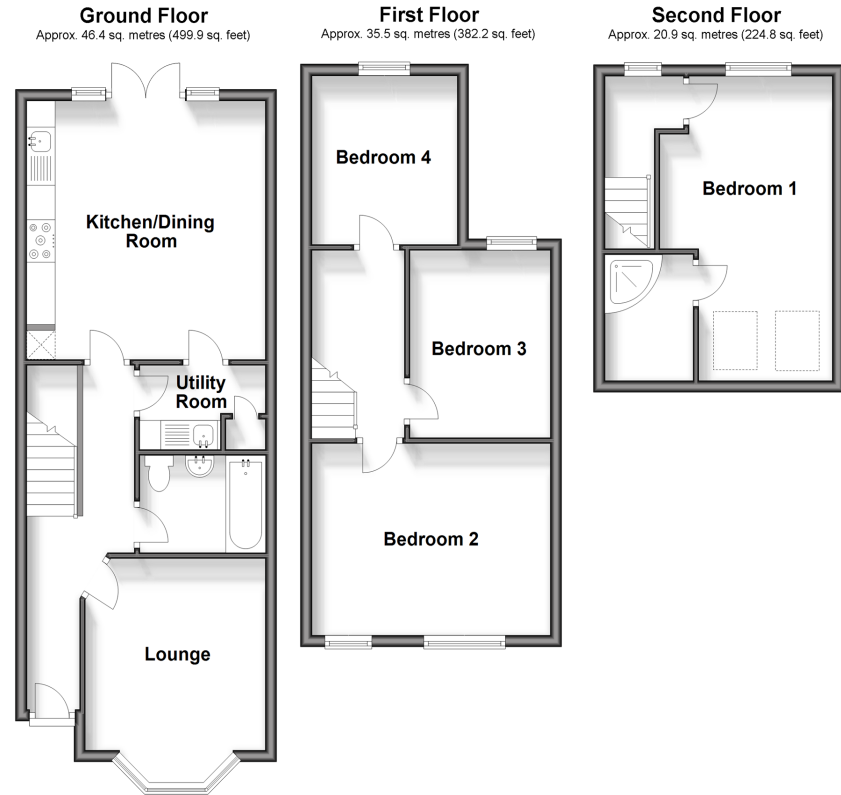
Bedroom 1: 13'7 x 11'0 (4.14m x 3.36m)
 Bedroom 2: 11'0 x 8'2 (3.36m x 2.49m)
 Bedroom 3: 9'5 x 8'6 (2.87m x 2.59m)

SECOND FLOOR

Master Bedroom: 17'5 x 8'1 (5.31m x 2.47m)
 En Suite

OUTSIDE

Rear Garden



Call Walthamstow - 020 8509 0092 ■ douglasallen.co.uk

- A private rental licensing scheme applies to some properties in this area, please contact us before proceeding
- Legal advice should be taken to verify fixtures/fittings, planning, alterations and/or lease details
- Appliances & services are untested, dimensions are approximate and floor plans are not to scale



53117401/20240109/DM/S