



Guide Price
£650,000

Freehold

3x  1x  1x 

**Glenthorne Road,
Walthamstow, E17**

 **DOUGLAS
ALLEN**
Helping you move forwards



Main features

- Lovely period terraced house
- Quiet residential street
- Close to shops and schools
- Also close to Blackhorse and St James stations
- Basement/storage

Accommodation

BASEMENT

Cellar

GROUND FLOOR

Living Room: 14'1 x 11'6 (4.30m x 3.51m)

Dining Room: 11'6 x 9'10 (3.51m x 3.00m)

Kitchen: 18'1 x 8'10 (5.52m x 2.69m)

FIRST FLOOR

Bedroom 1: 14'9 x 11'6 (4.50m x 3.51m)

Bedroom 2: 14'5 x 9'10 (4.40m x 3.00m)

Bedroom 3: 10'10 x 9'10 (3.30m x 3.00m)

Bathroom

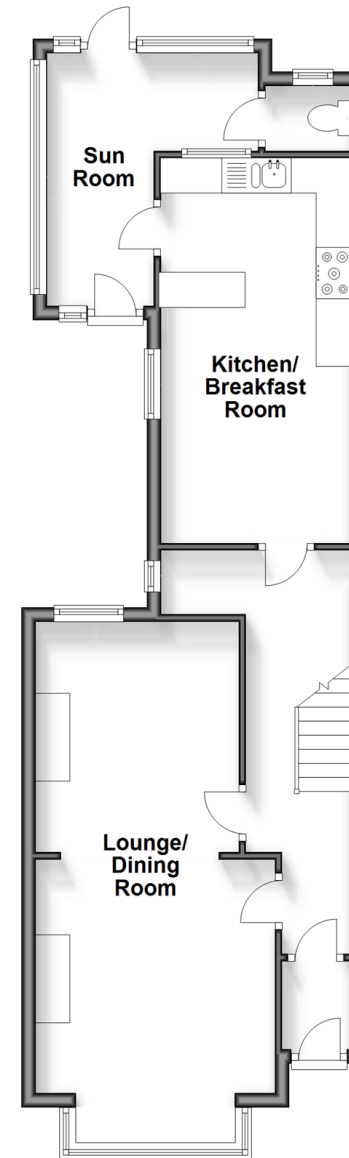
OUTSIDE

Front Garden

Rear Garden

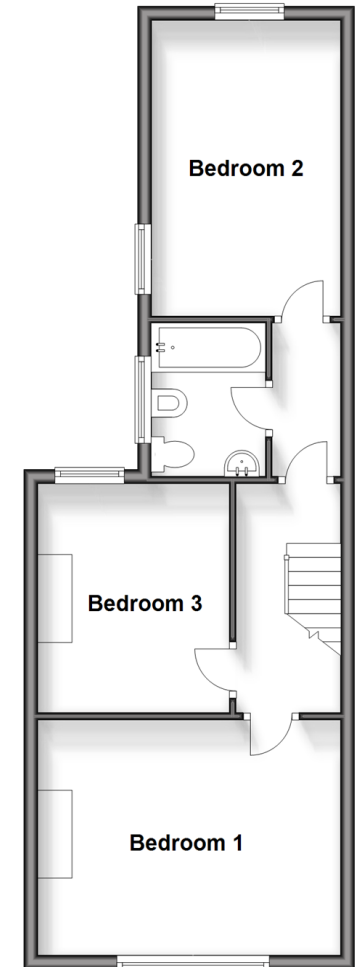
Ground Floor

Approx. 58.1 sq. metres (625.0 sq. feet)



First Floor

Approx. 47.5 sq. metres (510.8 sq. feet)



Call Walthamstow - 020 8509 0092 ■ douglasallen.co.uk

- A private rental licensing scheme applies to some properties in this area, please contact us before proceeding
- Legal advice should be taken to verify fixtures/fittings, planning, alterations and/or lease details
- Appliances & services are untested, dimensions are approximate and floor plans are not to scale



53117384/20240522/KS/JC