



Offers In Excess Of £200,000 Leasehold

1x  1x  1x 

Cassis Court, Chigwell
Lane, Loughton, Essex,
IG10



Main features

- First floor flat within a modern gated development
- Short walk to the station, shops and restaurants
- 2 allocated parking spaces
- Ideal first purchase or buy to let investment
- Good sized accommodation
- Being sold chain free

Accommodation

FIRST FLOOR

Entrance Hall

Lounge/Diner: 17'10 x 9'8 (5.44m x 2.95m)

Kitchen : 8'0 x 7'0 (2.44m x 2.14m)

Bedroom : 11'9 x 9'6 (3.58m x 2.90m)

Bathroom

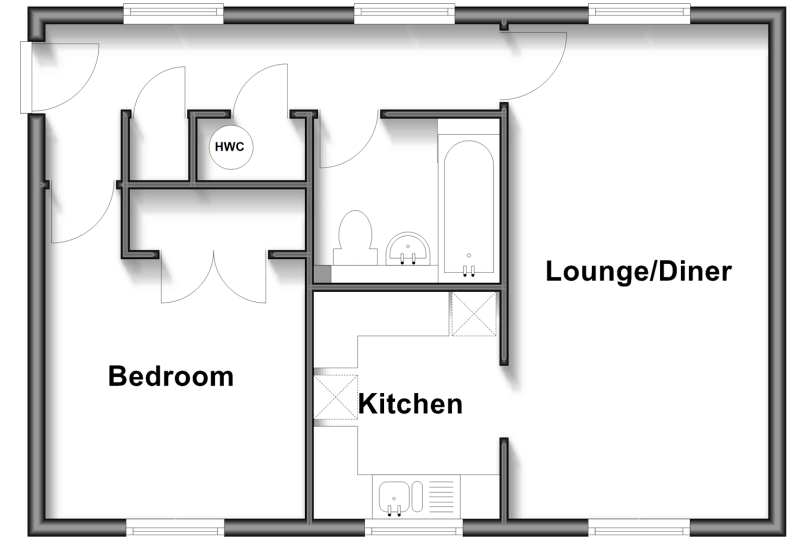
OUTSIDE

2 Allocated Parking Spaces

Communal Garden

First Floor

Approx. 46.1 sq. metres (496.1 sq. feet)



Call Loughton - 020 8502 1326 ■ douglasallen.co.uk

- Legal advice should be taken to verify fixtures/fittings, planning, alterations and/or lease details
- Appliances & services are untested, dimensions are approximate and floor plans are not to scale



52317350/20250514/CP1/LA