



Price
£400,000

Freehold

2x  1x  2x 

**Barncroft Green,
Loughton, Essex, IG10**

OVER 60?

Secure this property
for up to **59% less!**

 **DOUGLAS
ALLEN**
Helping you move forwards



Main features

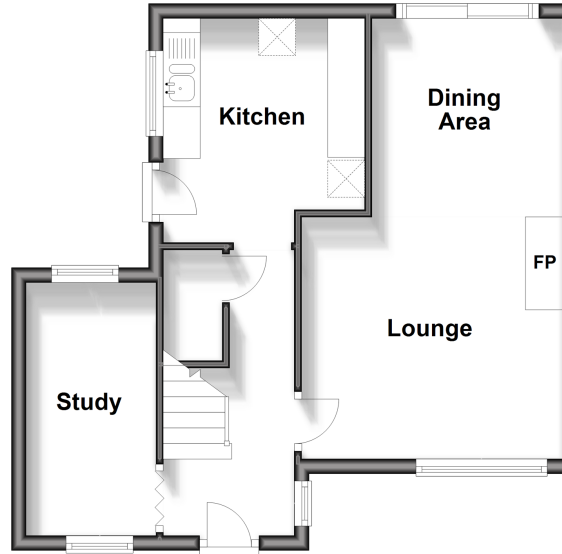
- Semi-detached house with good size garden
- Well proportioned family home requiring refurbishment
- Great location in a quiet turning close to Loughton amenities
- The property offers huge potential to create your perfect home
- Offered with no onward chain

Call Loughton - 020 8502 1326 ■ douglasallen.co.uk

- A private rental licensing scheme applies to some properties in this area, please contact us before proceeding
- Legal advice should be taken to verify fixtures/fittings, planning, alterations and/or lease details
- Through a Homewise Home For Life Plan people aged 60+ can secure this property for up to 59% less, by purchasing a Lifetime Lease.

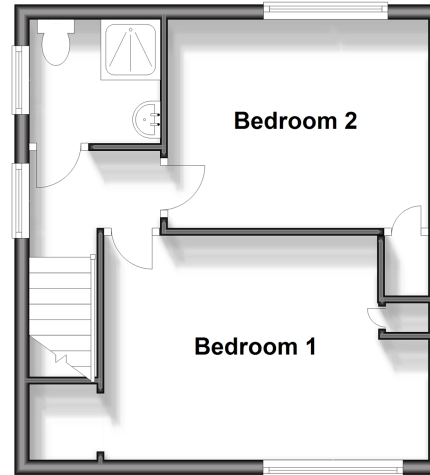
Ground Floor

Approx. 40.2 sq. metres (432.4 sq. feet)



First Floor

Approx. 32.0 sq. metres (344.5 sq. feet)



Accommodation

GROUND FLOOR

- Entrance Hall
- Lounge: 11'5 x 10'0 (3.48m x 3.05m)
- Dining Area: 9'0 x 8'5 (2.75m x 2.57m)
- Kitchen: 9'11 x 9'6 (3.02m x 2.90m)
- Study: 11'1 x 5'9 (3.38m x 1.75m)

FIRST FLOOR

- Landing
- Bedroom 1: 14'5 x 9'5 (4.40m x 2.87m)
- Bedroom 2: 11'6 x 9'4 (3.51m x 2.85m)
- Family Bathroom

OUTSIDE

- Rear Garden
- Front Garden
- Allocated Parking

- If buying to let, the energy rating will need to be improved to at least 'E' rating before you can let the property
- Appliances & services are untested, dimensions are approximate and floor plans are not to scale



52317290/20240518/KA/IW