



**Price**  
**£500,000**

**Freehold**

3x  3x  1x 

**Chester Road,  
Loughton, Essex, IG10**

 **DOUGLAS  
ALLEN**  
Helping you move forwards



## Main features

- Terraced house with conservatory and ground floor shower room
- 2 further shower rooms
- Off road parking for several cars
- Large rear garden
- Good condition throughout
- Close to shops, schools and Central Line station

## Accommodation

### GROUND FLOOR

- Enclosed Porch
- Entrance Hall
- Lounge: 20'3 x 13'8 (6.18m x 4.17m)
- Kitchen/Diner: 13'7 x 10'6 (4.14m x 3.20m)
- Conservatory: 12'0 x 10'10 (3.66m x 3.30m)
- Shower Room

### FIRST FLOOR

- Landing
- Bedroom 1: 12'2 x 11'2 (3.71m x 3.41m)
- Bedroom 2: 13'9 x 8'10 (4.19m x 2.69m)
- Bedroom 3: 12'2 x 7'0 (3.71m x 2.14m)
- Family Bathroom

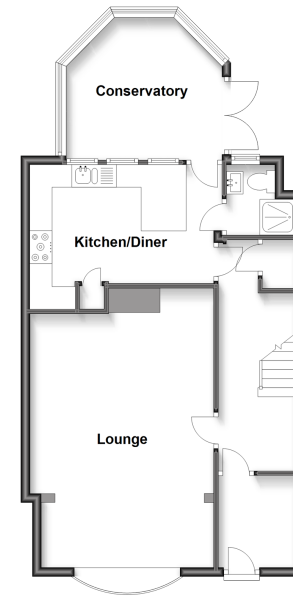
### SECOND FLOOR

- Loft Room 1: 14'5 x 10'10 (4.40m x 3.30m)
- Loft Room 2: 7'10 x 5'2 (2.39m x 1.58m)
- Shower Room

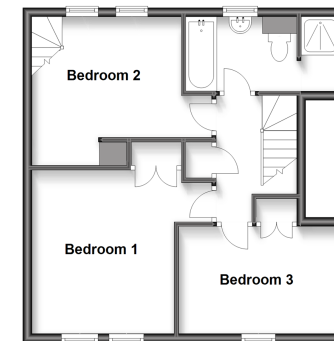
### OUTSIDE

- Rear Garden
- Off Road Parking

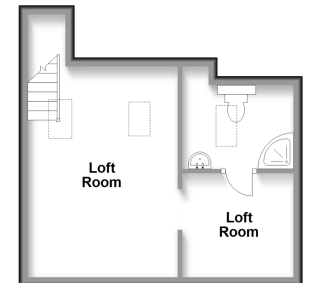
**Ground Floor**  
Approx. 63.0 sq. metres (678.2 sq. feet)



**First Floor**  
Approx. 46.4 sq. metres (499.8 sq. feet)



**Second Floor**  
Approx. 28.1 sq. metres (302.4 sq. feet)



**Call Loughton - 020 8502 1326 ■ [douglasallen.co.uk](http://douglasallen.co.uk)**

- A private rental licensing scheme applies to some properties in this area, please contact us before proceeding
- Legal advice should be taken to verify fixtures/fittings, planning, alterations and/or lease details
- Appliances & services are untested, dimensions are approximate and floor plans are not to scale



52317271/20240316/KA/LL