



OVER 60?

Secure this property
for up to **59% less!**

Price
£390,000

Freehold

2x  1x  1x 

**Burney Drive, Loughton,
Essex, IG10**

 **DOUGLAS
ALLEN**
Helping you move forwards



Main features

- Terraced house close to shops and amenities
- Potential to convert to 3 bedrooms (subject to consents)
- Private rear garden with side access
- Walking distance to Debden station
- Thomas Willingale Primary School & Debden Park High School catchments

Accommodation

GROUND FLOOR

Entrance Hallway

Lounge: 12'9 maximum x 11'10 maximum (3.89m x 3.61m)

Kitchen/Dining Area: 10'9 x 8'4 (3.28m x 2.54m)

FIRST FLOOR

Landing

Bedroom 1: 18'7 x 10'9 maximum (5.67m x 3.28m)

Bedroom 2: 11'9 maximum x 9'8 (3.58m x 2.95m)

Family Bathroom

Separate Toilet

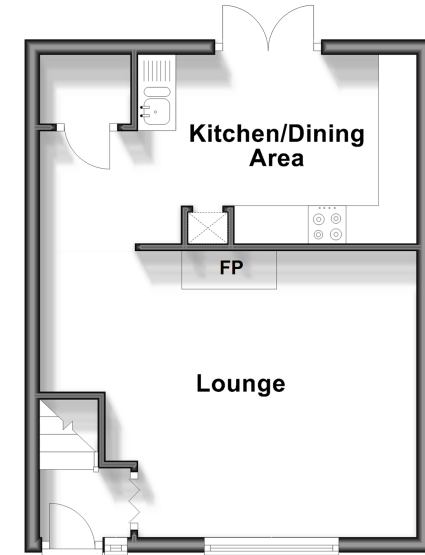
OUTSIDE

Rear Garden

Front Garden

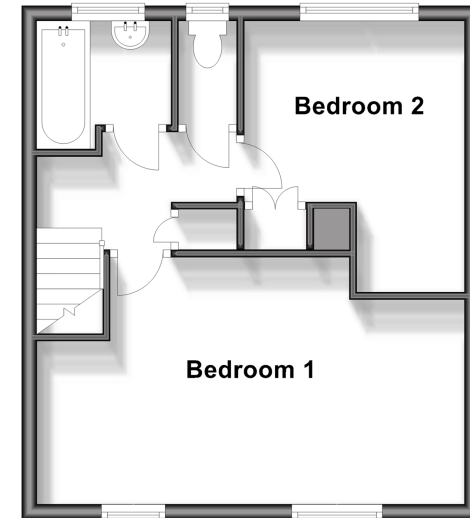
Ground Floor

Approx. 31.6 sq. metres (340.3 sq. feet)



First Floor

Approx. 35.9 sq. metres (386.5 sq. feet)



Call Loughton - 020 8502 1326 ■ douglasallen.co.uk

- A private rental licensing scheme applies to some properties in this area, please contact us before proceeding
- Legal advice should be taken to verify fixtures/fittings, planning, alterations and/or lease details
- Appliances & services are untested, dimensions are approximate and floor plans are not to scale
- Through a Homewise Home For Life Plan people aged 60+ can secure this property for up to 59% less, by purchasing a Lifetime Lease.



52317273/20240224/KA/JC