



**Price**  
**£550,000**

**Freehold**

4x  1x  1x 

**Kingsley Road,  
Loughton, Essex, IG10**

 **DOUGLAS  
ALLEN**  
Helping you move forwards



## Main features

- Terraced house with allocated parking
- Cul-de-sac location
- Primary school and pre-school nearby
- Walking distance to selection of local shops
- Debden Central Line station nearby
- Easy access to the M11 southbound

## Accommodation

### GROUND FLOOR

- Entrance Hall
- Cloakroom
- Kitchen/Dining Room: 16'8 x 12'1 (5.08m x 3.69m)
- Lounge: 16'10 x 12'9 (5.13m x 3.89m)
- Study: 8'10 x 7'8 (2.69m x 2.34m)

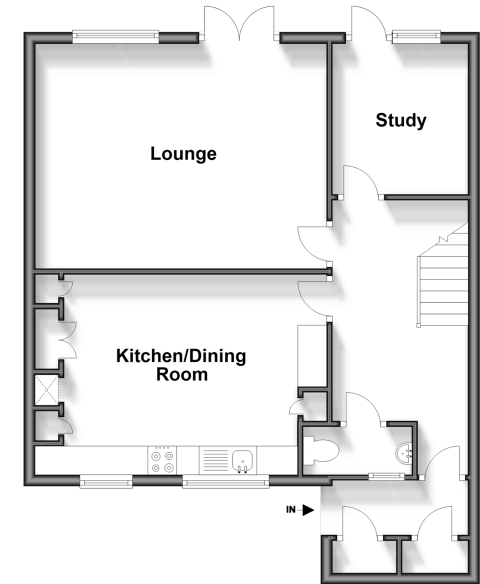
### FIRST FLOOR

- Landing
- Bedroom 1: 10'8 x 10'4 (3.25m x 3.15m)
- Bedroom 2: 11'10 x 9'7 (3.61m x 2.92m)
- Bedroom 3: 13'9 x 8'5 (4.19m x 2.57m)
- Bedroom 4: 10'8 x 5'11 (3.25m x 1.80m)
- Family Bathroom

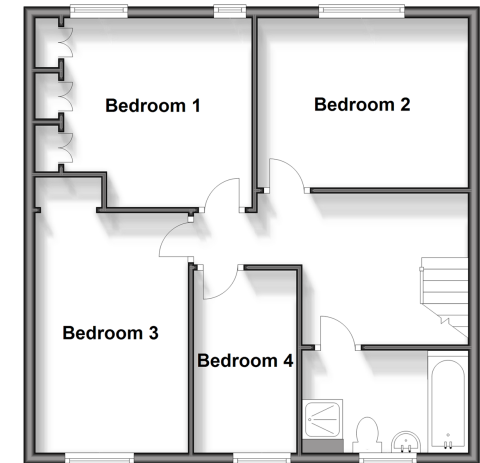
### OUTSIDE

- Rear Garden
- Allocated Parking

**Ground Floor**  
Approx. 60.3 sq. metres (649.5 sq. feet)



**First Floor**  
Approx. 56.8 sq. metres (611.2 sq. feet)



Call Loughton - 020 8502 1326 ■ [douglasallen.co.uk](http://douglasallen.co.uk)

- A private rental licensing scheme applies to some properties in this area, please contact us before proceeding
- Legal advice should be taken to verify fixtures/fittings, planning, alterations and/or lease details
- Appliances & services are untested, dimensions are approximate and floor plans are not to scale



52317259/20240316/KA/LL