



Price
£590,000

Freehold

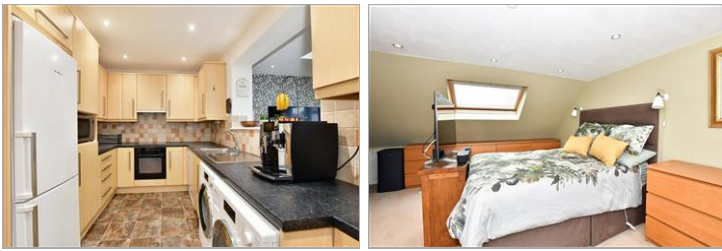
4x  2x  2x 

**Lawton Road, Loughton,
Essex, IG10**

OVER 60?

Secure this property
for up to **59% less!**

 **DOUGLAS
ALLEN**
Helping you move forwards



Main features

- End of terrace house
- Faces onto a green area
- Extended to the rear and into the loft
- Rear garden with shed for storage
- Studio in the garden
- Close to shops and Central Line station

Accommodation

GROUND FLOOR

Enclosed Entrance Porch
Entrance Hall
Lounge: 15'2 x 11'3 (4.63m x 3.43m)
Kitchen: 18'7 x 8'3 (5.67m x 2.52m)
Dining Area: 17'1 x 9'4 (5.21m x 2.85m)

FIRST FLOOR

Landing
Bedroom 2: 10'11 x 10'11 (3.33m x 3.33m)
Bedroom 3: 11'4 x 9'9 (3.46m x 2.97m)
Bedroom 4: 7'3 x 5'6 (2.21m x 1.68m)
Family Bathroom

SECOND FLOOR

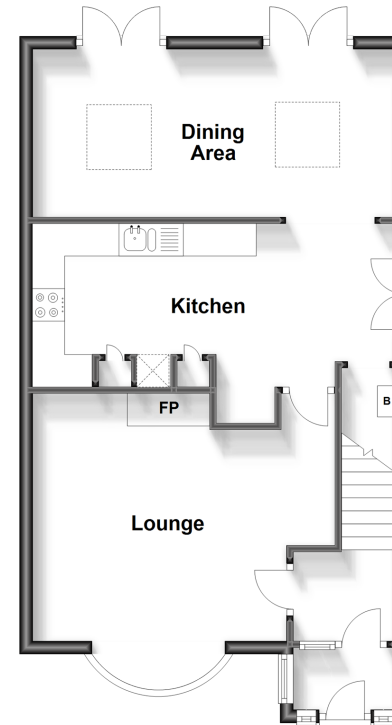
Landing
Bedroom 1: 15'4 x 11'11 (4.68m x 3.63m)
Shower Room

OUTSIDE

Rear Garden
Front Garden
Off Road Parking

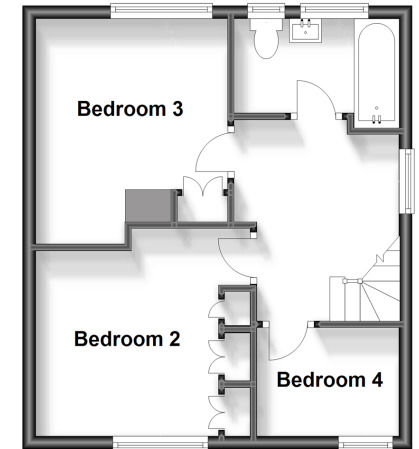
Ground Floor

Approx. 53.7 sq. metres (577.5 sq. feet)



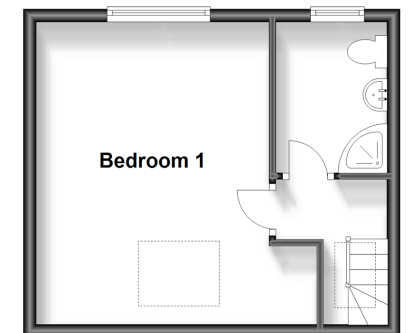
First Floor

Approx. 36.4 sq. metres (391.4 sq. feet)



Second Floor

Approx. 25.4 sq. metres (273.5 sq. feet)



Call Loughton - 020 8502 1326 ■ douglasallen.co.uk

- A private rental licensing scheme applies to some properties in this area, please contact us before proceeding
- Legal advice should be taken to verify fixtures/fittings, planning, alterations and/or lease details
- Appliances & services are untested, dimensions are approximate and floor plans are not to scale
- Through a Homewise Home For Life Plan people aged 60+ can secure this property for up to 59% less, by purchasing a Lifetime Lease.



52317218/20240217/KA/LL