



Price
£230,000

Leasehold

2x  2x  1x 

**Harrison House,
Westwood Road, Ilford,
Essex, IG3**

OVER 60?

Secure this property
for up to **59% less!**

 **DOUGLAS
ALLEN**
Helping you move forwards



Main features

- **Second floor flat with off street parking**
- **Patio doors open onto roof terrace**
- **Close to Goodmayes station/Elizabeth Line**
- **Bus & road links to Ilford Town Centre**
- **Walking distance to shops & places of worship**
- **Chain Free**

Accommodation

SECOND FLOOR

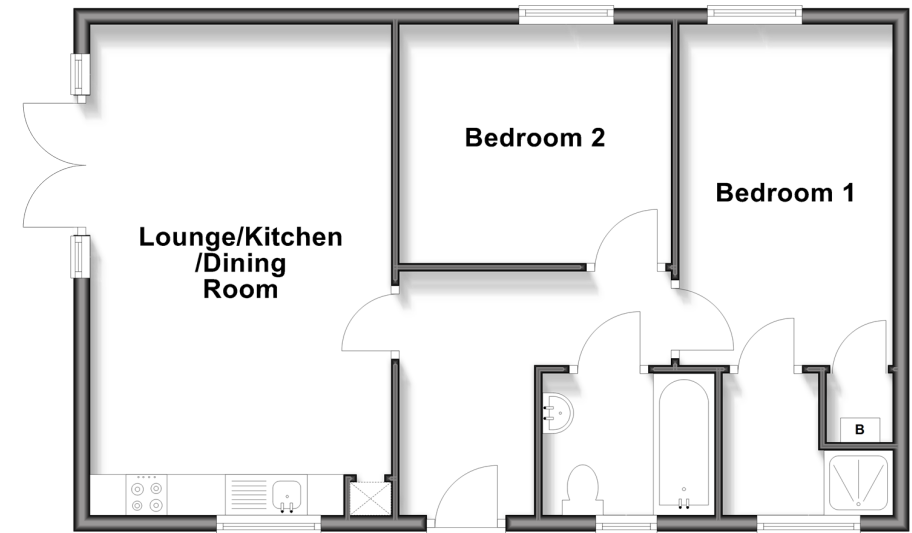
Entrance Hall
 Lounge/Kitchen/Dining Room: 19'8 x 12'1 (6.00m x 3.69m)
 Bedroom 1: 14'0 x 8'5 (4.27m x 2.57m)
 En-suite
 Bedroom 2: 10'8 x 9'6 (3.25m x 2.90m)
 Bathroom

OUTSIDE

Roof Terrace
 Off Street Parking

Second Floor

Approx. 59.1 sq. metres (635.9 sq. feet)



Call Ilford - 020 8518 0044 ■ douglasallen.co.uk

■ Legal advice should be taken to verify fixtures/fittings, planning, alterations and/or lease details
 ■ Through a Homewise Home For Life Plan people aged 60+ can secure this property for up to 50% less, by purchasing a Lifetime Lease.

■ Appliances & services are untested, dimensions are approximate and floor plans are not to scale