



Price
£445,000

Freehold

3x  1x  2x 

**Windsor Road, Ilford,
Essex, IG1**

OVER 60?

Secure this property
for up to **59% less!**

 **DOUGLAS
ALLEN**
Helping you move forwards



Main features

- Terraced house with attractive entrance porch
- Off street parking
- Close to Ilford station
- Walking distance to Exchange Shopping Centre
- NO ONWARD CHAIN

Accommodation

GROUND FLOOR

Entrance Porch

Entrance Hall

Lounge/Dining Room: 24'0 x 9'7 (7.32m x 2.92m)

Kitchen: 9'0 x 7'0 (2.75m x 2.14m)

FIRST FLOOR

Landing

Bedroom 1: 11'7 x 10'7 (3.53m x 3.23m)

Bedroom 2: 11'1 x 8'3 (3.38m x 2.52m)

Bedroom 3: 10'9 x 6'4 (3.28m x 1.93m)

Bathroom

OUTSIDE

Rear Garden

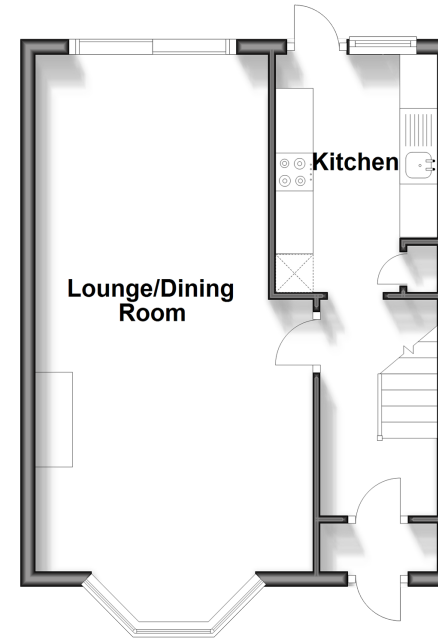
Off Street Parking

Call Ilford - 020 8518 0044 ■ douglasallen.co.uk

- Legal advice should be taken to verify fixtures/fittings, planning, alterations and/or lease details
- Appliances & services are untested, dimensions are approximate and floor plans are not to scale
- Through a Homewise Home For Life Plan people aged 60+ can secure this property for up to 59% less, by purchasing a Lifetime Lease.

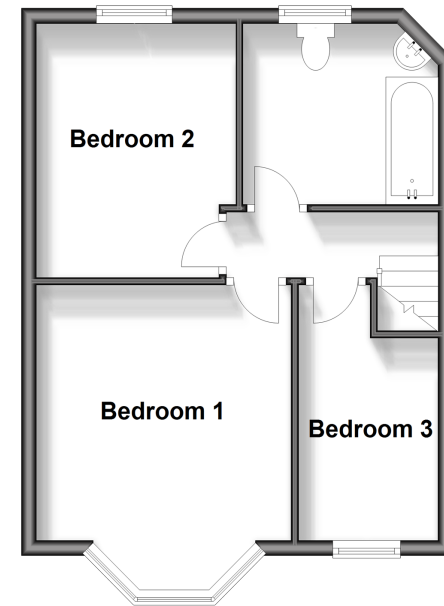
Ground Floor

Approx. 37.0 sq. metres (398.2 sq. feet)



First Floor

Approx. 36.8 sq. metres (396.5 sq. feet)



52016786/20250121/BA/MS