

**Price**  
**£545,000**

**Freehold**

5x  2x  2x 

**Richmond Road, Ilford,  
Essex, IG1**

**OVER 60?**

Secure this property  
for up to **59% less!**

 **DOUGLAS  
ALLEN**  
Helping you move forwards





## Main features

- Spacious terraced house with off street parking
- Living areas spread over three floors
- Ground floor cloakroom
- Good transport links to Stratford & City
- Close to Primary & Secondary schools

## Accommodation

### GROUND FLOOR

Entrance Porch  
Entrance Hall  
Lounge: 17'5 x 11'7 (5.31m x 3.53m)  
Dining Area: 12'0 x 11'0 (3.66m x 3.36m)  
Kitchen/Breakfast Room: 17'6 x 9'0 (5.34m x 2.75m)  
Cloakroom

### FIRST FLOOR

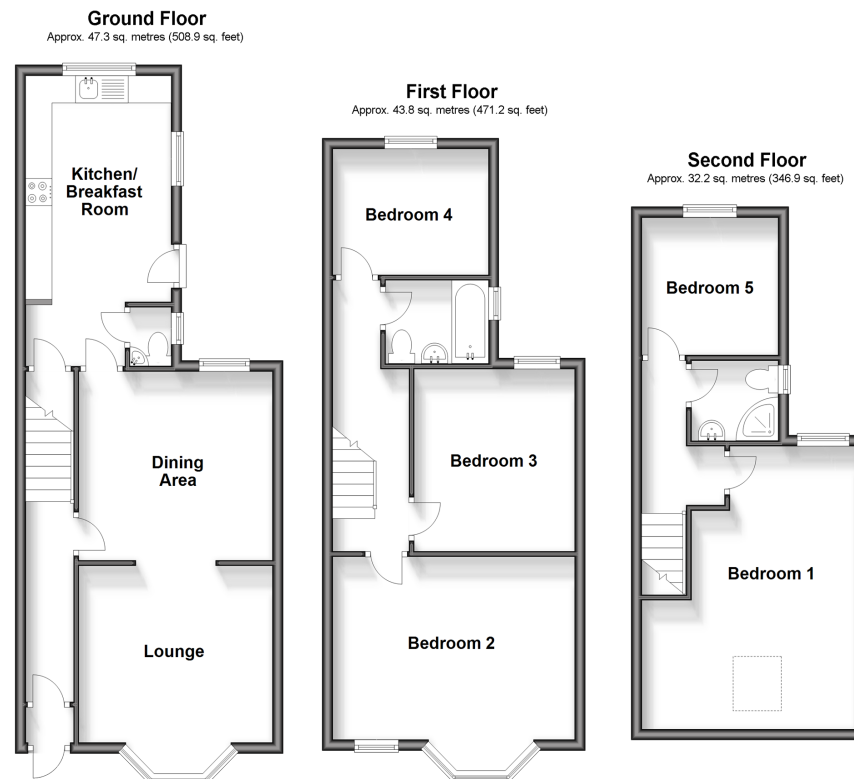
Landing  
Bedroom 2: 15'0 x 12'9 (4.58m x 3.89m)  
Bedroom 3: 11'2 x 9'5 (3.41m x 2.87m)  
Bedroom 4: 9'3 x 7'4 (2.82m x 2.24m)  
Bathroom

### SECOND FLOOR

Landing  
Bedroom 1: 17'1 x 10'5 (5.21m x 3.18m)  
Bedroom 5: 8'7 x 8'3 (2.62m x 2.52m)  
Bathroom

### OUTSIDE

Off Street Parking  
Rear Garden



**Call Ilford - 020 8518 0044 ■ [douglasallen.co.uk](http://douglasallen.co.uk)**

- A private rental licensing scheme applies to some properties in this area, please contact us before proceeding
- Legal advice should be taken to verify fixtures/fittings, planning, alterations and/or lease details
- Appliances & services are untested, dimensions are approximate and floor plans are not to scale
- Through a Homewise Home For Life Plan people aged 60+ can secure this property for up to 59% less, by purchasing a Lifetime Lease.



52016773/20240928/CN/NK