



Price
£500,000

Freehold

3x  1x  1x 

**Dersingham Avenue,
London, E12**

OVER 60?

Secure this property
for up to **59% less!**

 **DOUGLAS
ALLEN**
Helping you move forwards



Main features

- Immaculate terraced house close to good road links
- Modern galley style fitted kitchen
- Low maintenance rear garden
- Bus links to Ilford & Stratford Town Centres
- Close to schools, shops & places of worship

Accommodation

GROUND FLOOR

Entrance Hall

Lounge/Dining Area: 27'11 x 11'5 (8.51m x 3.48m)

Kitchen: 16'6 x 9'4 (5.03m x 2.85m)

FIRST FLOOR

Landing

Bedroom 1: 14'9 x 14'8 (4.50m x 4.47m)

Bedroom 2: 11'8 x 8'2 (3.56m x 2.49m)

Bedroom 3: 9'3 x 8'9 (2.82m x 2.67m)

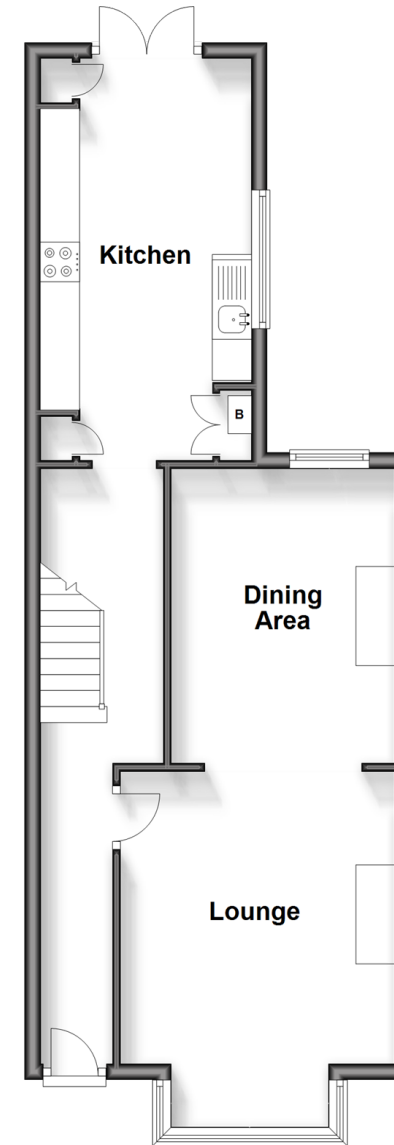
Bathroom

OUTSIDE

Front and Rear Garden

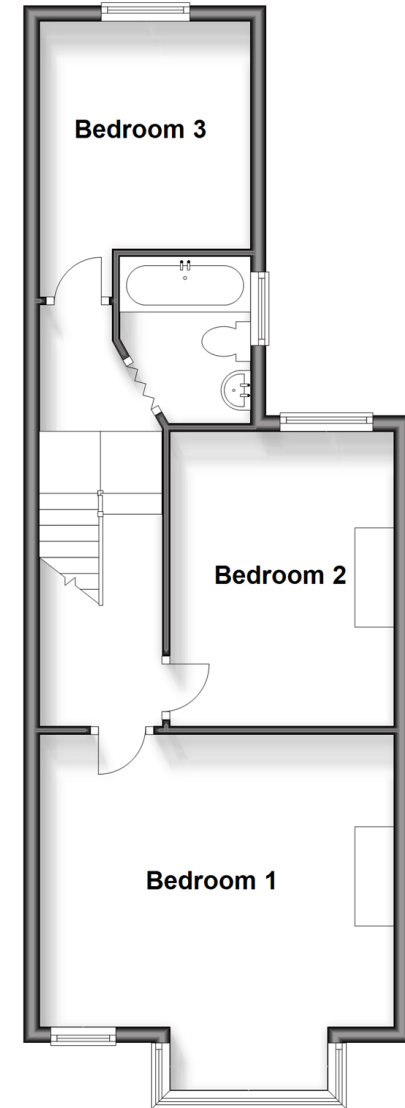
Ground Floor

Approx. 49.2 sq. metres (529.3 sq. feet)



Split Level First Floor

Approx. 49.4 sq. metres (531.6 sq. feet)



Call Ilford - 020 8518 0044 ■ douglasallen.co.uk

- A private rental licensing scheme applies to some properties in this area, please contact us before proceeding
- Legal advice should be taken to verify fixtures/fittings, planning, alterations and/or lease details
- Appliances & services are untested, dimensions are approximate and floor plans are not to scale
- Through a Homewise Home For Life Plan people aged 60+ can secure this property for up to 59% less, by purchasing a Lifetime Lease.



53212369/20240608/LA/AV