



Price
£550,000

Freehold

4x  2x  1x 

**Cecil Road, Ilford, Essex,
IG1**

OVER 60?

Secure this property
for up to **59% less!**

 **DOUGLAS
ALLEN**
Helping you move forwards



Main features

- Spacious terraced house situated in the Borough of Redbridge
- Ground floor Wet Room & Cellar
- Large rear garden, ideal for outdoor entertaining
- Off street parking
- Walking distance to Ilford Lane & places of worship

Accommodation

BASEMENT
Cellar

GROUND FLOOR

Entrance Hall
Lounge/Diner: 26'5 x 19'5 (8.06m x 5.92m)
Kitchen/Breakfast Area: 19'7 x 8'3 (5.97m x 2.52m)
Bedroom 4: 10'5 x 9'4 (3.18m x 2.85m)
Wet Room

FIRST FLOOR

Landing
Bedroom 1: 15'4 x 10'5 (4.68m x 3.18m)
Bedroom 2: 12'4 x 11'5 (3.76m x 3.48m)
Bedroom 3: 8'7 x 8'4 (2.62m x 2.54m)
Bathroom

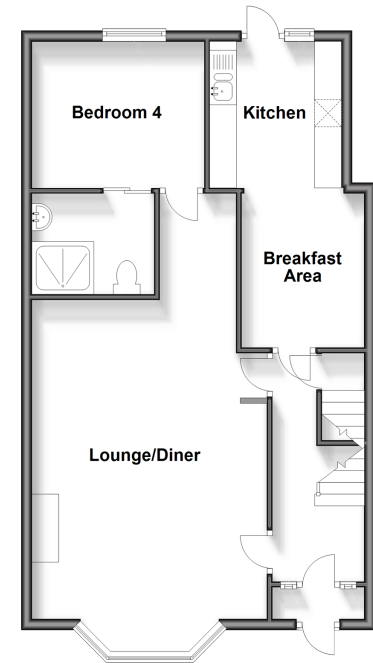
OUTSIDE

Rear Garden
Off Street Parking

Call Ilford - 020 8518 0044 ■ douglasallen.co.uk

- A private rental licensing scheme applies to some properties in this area, please contact us before proceeding
- Legal advice should be taken to verify fixtures/fittings, planning, alterations and/or lease details
- Appliances & services are untested, dimensions are approximate and floor plans are not to scale
- Through a Homewise Home For Life Plan people aged 60+ can secure this property for up to 59% less, by purchasing a Lifetime Lease.

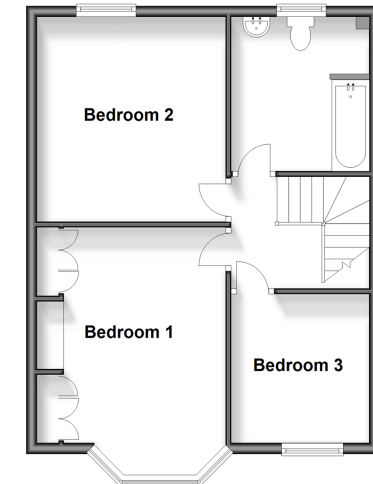
Ground Floor
Approx. 65.0 sq. metres (699.8 sq. feet)



Basement
Approx. 8.4 sq. metres (90.1 sq. feet)



First Floor
Approx. 48.9 sq. metres (526.0 sq. feet)



52016467/20240608/CN/AV