



Price
£325,000

Leasehold

2x  1x  1x 

**Milverton Gardens,
Ilford, Essex, IG3**

OVER 60?

Secure this property
for up to **59% less!**

 **DOUGLAS
ALLEN**
Helping you move forwards



Main features

- Ground floor converted flat with its own garden
- Close to Seven Kings Station and Goodmayes Station.
- Walking distance to local amenities
- Off street parking
- Perfect for first time buyers

Accommodation

GROUND FLOOR

Entrance Hall

Lounge/Dining Room: 15'0 x 15'0
(4.58m x 4.58m)

Kitchen: 10'8 x 6'11 (3.25m x 2.11m)

Utility Area: 9'8 x 6'4 (2.95m x 1.93m)

Bedroom 1: 13'2 x 10'5 (4.02m x 3.18m)

Bedroom 2: 9'1 x 5'4 (2.77m x 1.63m)

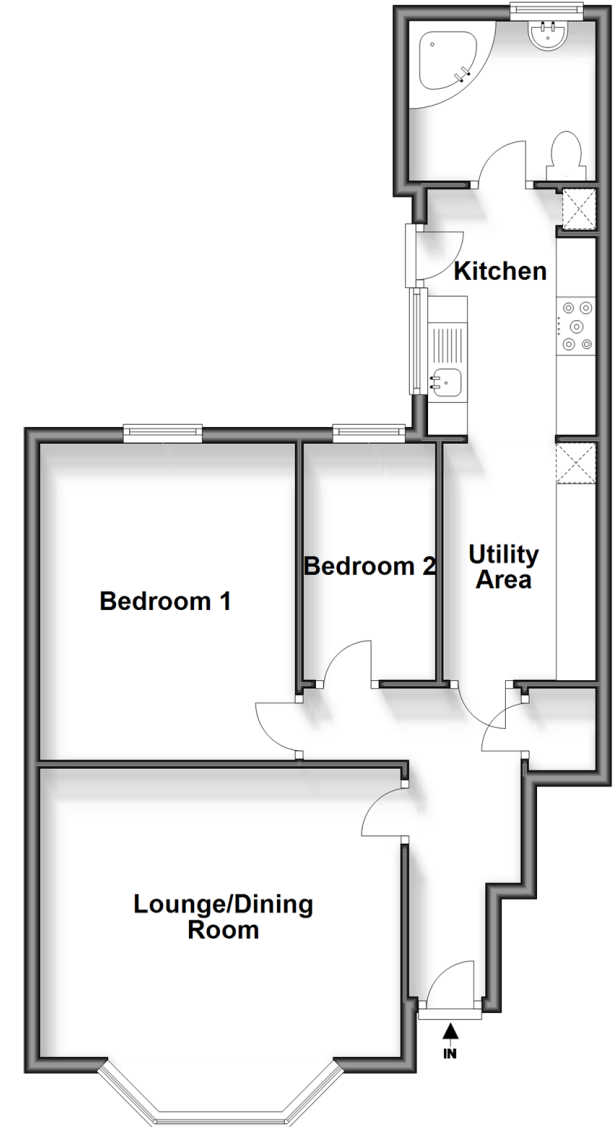
Bathroom

OUTSIDE

Rear Garden

Off Street Parking

Ground Floor
Approx. 61.2 sq. metres (658.3 sq. feet)



Call Ilford - 020 8518 0044 ■ douglasallen.co.uk

- A private rental licensing scheme applies to some properties in this area, please contact us before proceeding
- Legal advice should be taken to verify fixtures/fittings, planning, alterations and/or lease details
- Appliances & services are untested, dimensions are approximate and floor plans are not to scale
- Through a Homewise Home For Life Plan people aged 60+ can secure this property for up to 59% less, by purchasing a Lifetime Lease.



52016730/20240406/CN/NK