



OVER 60?

Secure this property
for up to **59% less!**

Price

£350,000

Leasehold

2x 🛏️ 2x 🚿 1x 🚗

**Icon Building, Ilford Hill,
Ilford, Essex, IG1**

 **DOUGLAS
ALLEN**
Helping you move forwards



Main features

- Stunning fourth floor apartment with large balcony
- Situated within the Redbridge Borough
- Walking distance to shops & Ilford station
- Bus & road links to Romford & Stratford Shopping Centres

Accommodation

FOURTH FLOOR

Entrance Hall

Lounge/Dining Area/Kitchen: 28'4 x 10'4 (8.64m x 3.15m)

Bedroom 1: 13'2 x 9'1 (4.02m x 2.77m)

En-Suite

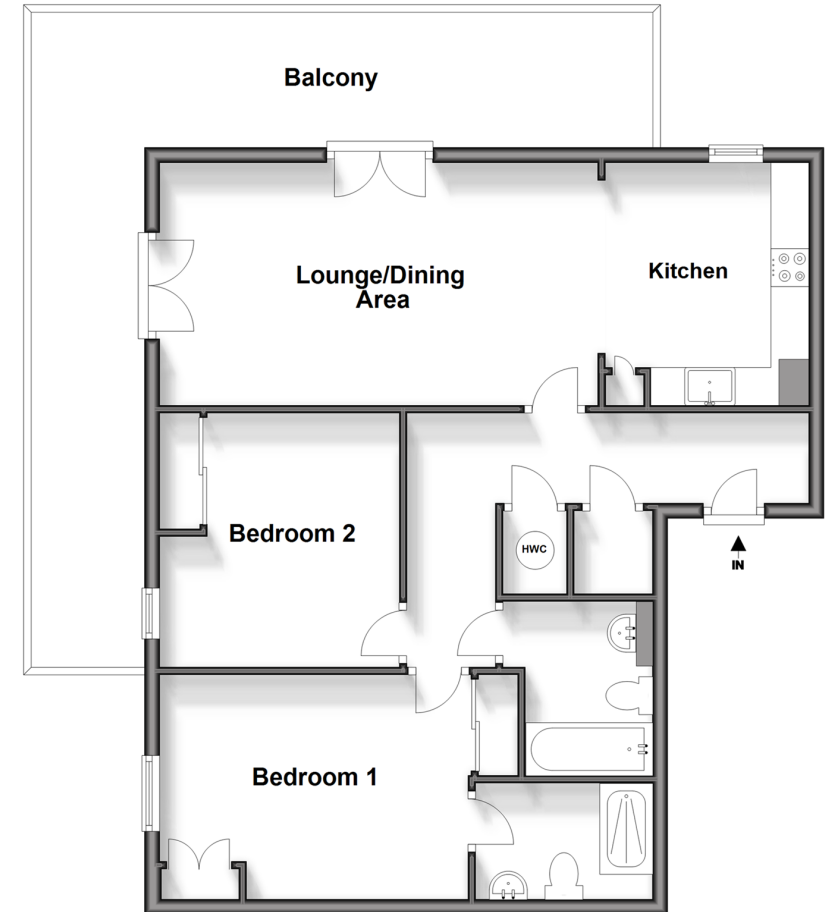
Bedroom 2: 11'0 x 10'1 (3.36m x 3.08m)

Bathroom

Balcony

Fourth Floor

Approx. 72.5 sq. metres (780.0 sq. feet)



Call Ilford - 020 8518 0044 ■ douglasallen.co.uk

- A private rental licensing scheme applies to some properties in this area, please contact us before proceeding
- Legal advice should be taken to verify fixtures/fittings, planning, alterations and/or lease details
- Appliances & services are untested, dimensions are approximate and floor plans are not to scale
- Through a Homewise Home For Life Plan people aged 60+ can secure this property for up to 59% less, by purchasing a Lifetime Lease.



52016717/20240206/CN/NK