



**Price**

**£90,000**

**Leasehold**

2x  1x  1x 

**Roding Court, Mill Road,  
Ilford, Essex, IG1**



**DOUGLAS  
ALLEN**

Helping you move forwards





## Main features

- Well maintained first floor apartment
- 30% shared ownership
- Off street parking & close to local bus links
- Walking distance to Ilford station & Elizabeth Line
- Open plan living area
- Ideal for first time buyers
- CHAIN FREE

## Accommodation

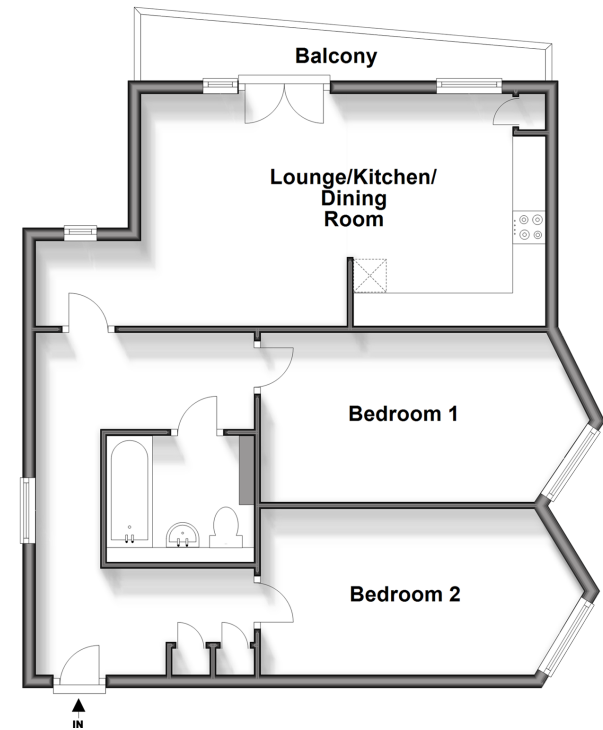
### FIRST FLOOR

Entrance Hall  
 Lounge/Kitchen/Dining Room: 11'5 x 10'3 (3.48m x 3.13m)  
 Kitchen: 12'1 x 9'5 (3.69m x 2.87m)  
 Bedroom 1: 14'6 x 8'6 (4.42m x 2.59m)  
 Bedroom 2: 13'9 x 8'3 (4.19m x 2.52m)  
 Bathroom  
 Balcony

### OUTSIDE

Off Street Parking

**First Floor**  
 Approx. 66.6 sq. metres (717.4 sq. feet)



**Call Ilford - 020 8518 0044 ■ [douglasallen.co.uk](http://douglasallen.co.uk)**

■ Legal advice should be taken to verify fixtures/fittings, planning, alterations and/or lease details

■ Appliances & services are untested, dimensions are approximate and floor plans are not to scale



52016678/20250118/CN/NK