



**Price**  
**£360,000**

**Freehold**

2x  1x  1x 

**Harrow Road, Ilford,  
Essex, IG1**

**OVER 60?**

Secure this property  
for up to **59% less!**



**DOUGLAS  
ALLEN**  
Helping you move forwards



## Main features

- Mid terraced 2 bedroom house located in South Ilford
- Off street parking
- Own rear garden
- Close to local shopping facilities and transport services
- Short walk to Ilford station and the Queen Elizabeth Line as well as other transport links

## Accommodation

### GROUND FLOOR

Kitchen: 8'2 x 6'1 (2.49m x 1.86m)

Cloak Room

Lounge/Diner: 18'5 x 12'2 (5.62m x 3.71m)

### FIRST FLOOR

Bedroom 1: 11'6 x 9'0 (3.51m x 2.75m)

Bedroom 2: 11'7 x 5'9 (3.53m x 1.75m)

Bathroom

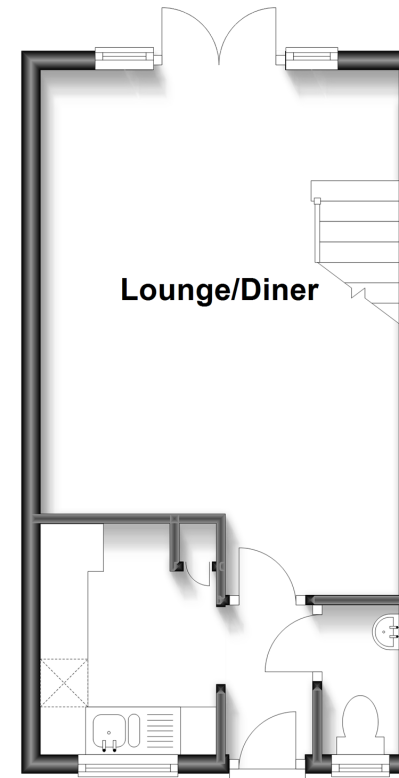
### OUTSIDE

Rear Garden

Off street parking

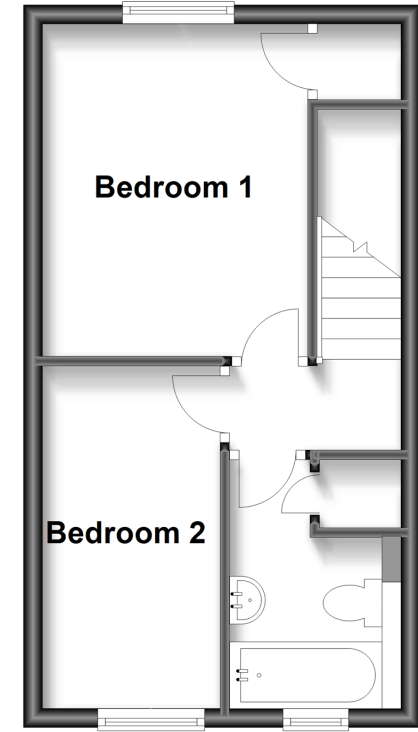
### Ground Floor

Approx. 27.1 sq. metres (291.9 sq. feet)



### First Floor

Approx. 27.1 sq. metres (291.9 sq. feet)



Call Ilford - 020 8518 0044 ■ [douglasallen.co.uk](http://douglasallen.co.uk)

- A private rental licensing scheme applies to some properties in this area, please contact us before proceeding
- Legal advice should be taken to verify fixtures/fittings, planning, alterations and/or lease details
- Appliances & services are untested, dimensions are approximate and floor plans are not to scale
- Through a Homewise Home For Life Plan people aged 60+ can secure this property for up to 59% less, by purchasing a Lifetime Lease.



52016441/20240615/CN/JS